

Adult Neurogenesis, Glia, and the Extracellular Matrix

Elise C. Cope¹ and Elizabeth Gould^{1,*}

¹Princeton Neuroscience Institute and Department of Psychology, Princeton University, Princeton, NJ 08544, USA

*Correspondence: goulde@princeton.edu

<https://doi.org/10.1016/j.stem.2019.03.023>

In the adult mammalian hippocampus, new neurons arise from stem and progenitor cell division, in a process known as adult neurogenesis. Adult-generated neurons are sensitive to experience and may participate in hippocampal functions, including learning and memory, anxiety and stress regulation, and social behavior. Increasing evidence emphasizes the importance of new neuron connectivity within hippocampal circuitry for understanding the impact of adult neurogenesis on brain function. In this Review, we discuss how the functional consequences of new neurons arise from the collective interactions of presynaptic and postsynaptic neurons, glial cells, and the extracellular matrix, which together form the “tetrapartite synapse.”

It is now generally accepted that stem cells reside in the adult mammalian brain, and in certain regions, these cells divide *in situ* and give rise to new neurons, a phenomenon referred to as adult neurogenesis. In the hippocampus, adult neurogenesis produces one type of neuron—the dentate gyrus granule cell. The process begins with the largely asymmetric division of radial glial stem cells residing in the subgranular zone (sgz), a region just between the granule cell layer (gcl) and the hilus (Seri et al., 2001). These cells have the capacity to self-renew and to generate either neurons or astrocytes (Bonaguidi et al., 2011; Suh et al., 2007). The daughter cells of radial glial stem cells are highly proliferative amplifying stem cells, which in turn generate neuroblasts (Gonçalves et al., 2016a; Suh et al., 2007) (Figure 1A). The cell bodies of these new neurons then migrate the short distance from the sgz into the gcl where they begin their differentiation into granule neurons (Gonçalves et al., 2016a) (Figure 1A). These new granule neurons then integrate into the circuitry of the hippocampus, where they subsequently impact behavioral function.

In order to understand the functional consequences of adult neurogenesis, it is necessary to identify the circumstances that modulate the connectivity of newly generated neurons. The majority of research on this topic has focused exclusively on connectivity between neurons, without consideration of the influence of nonneuronal cells or the extracellular milieu in which new connections are formed. A growing literature suggests that understanding synaptic function and plasticity requires consideration of both glial cells as well as the extracellular matrix (ECM), which together with the presynaptic and postsynaptic neurons form the “tetrapartite synapse” (Dityatev and Rusakov, 2011; Smith et al., 2015a). In this review, we consider the formation of new neurons from stem cells in the adult hippocampus, with specific relevance to the integration of new neurons into the circuitry and their impact on brain function. To review this material in a comprehensive and functionally meaningful way, we consider the production and integration of new neurons in the context of the tetrapartite synapse with specific reference to the influence of glia and the ECM on adult neurogenesis and hippocampal function.

Evidence of Adult Neurogenesis and the Integration of New Neurons into the Hippocampal Circuitry

Although adult neurogenesis is robust in the hippocampus of rodents, the extent to which it exists in humans has been a matter of continued debate. Evidence that adult neurogenesis exists for a large number of species, ranging from rodents (Jessberger and Gage, 2014; Snyder et al., 2009a) to monkeys (Gould et al., 1998, 1999), strongly suggests that this phenomenon is common to most mammalian species. In the rodent brain, the number of new neurons is substantial, with as many as 9,000 new granule cells being added to the young adult rat dentate gyrus daily (Cameron and McKay, 2001). Relatively high numbers of new neurons have also been reported in the adult human hippocampus (Boldrini et al., 2018; Eriksson et al., 1998; Knoth et al., 2010; Spalding et al., 2013; Moreno-Jiménez et al., 2019). A few studies contradict these findings (Cipriani et al., 2018; Sorrells et al., 2018), but the majority of reports provide positive evidence for adult neurogenesis in the hippocampus of humans, suggesting that studying this process in rodents is likely relevant to understanding human brain plasticity. For this review, evidence from rodent studies will be considered except in cases otherwise stated.

Once stem cell division produces immature neurons, these cells undergo an extensive maturation process that includes the growth of axons and dendrites and the formation of synaptic connections. Within 2 weeks of their generation, new neurons begin to take on the morphological characteristics of mature granule cells with a single dendritic tree extending toward the molecular layer and the formation of dendritic spines, primary sites of excitatory synapses (Zhao et al., 2006; Figure 1A). Beginning <1 week after their generation, new granule cells extend axons, known as mossy fibers, through the hilus toward the CA3 and CA2 subregions of the hippocampus (Llorens-Martín et al., 2015; Zhao et al., 2006). Mossy fibers from new granule cells begin to form synapses with excitatory pyramidal cells in the CA3 and CA2 subregions (Gu et al., 2012; Llorens-Martín et al., 2015; Toni et al., 2008) as well as with hilar mossy cells (Toni et al., 2008) by ~2–3 weeks post-mitosis (Figure 1B).

Much research has focused on understanding how and when new granule cells integrate into the circuitry of the hippocampus. Mature granule cells are known to receive synaptic input from



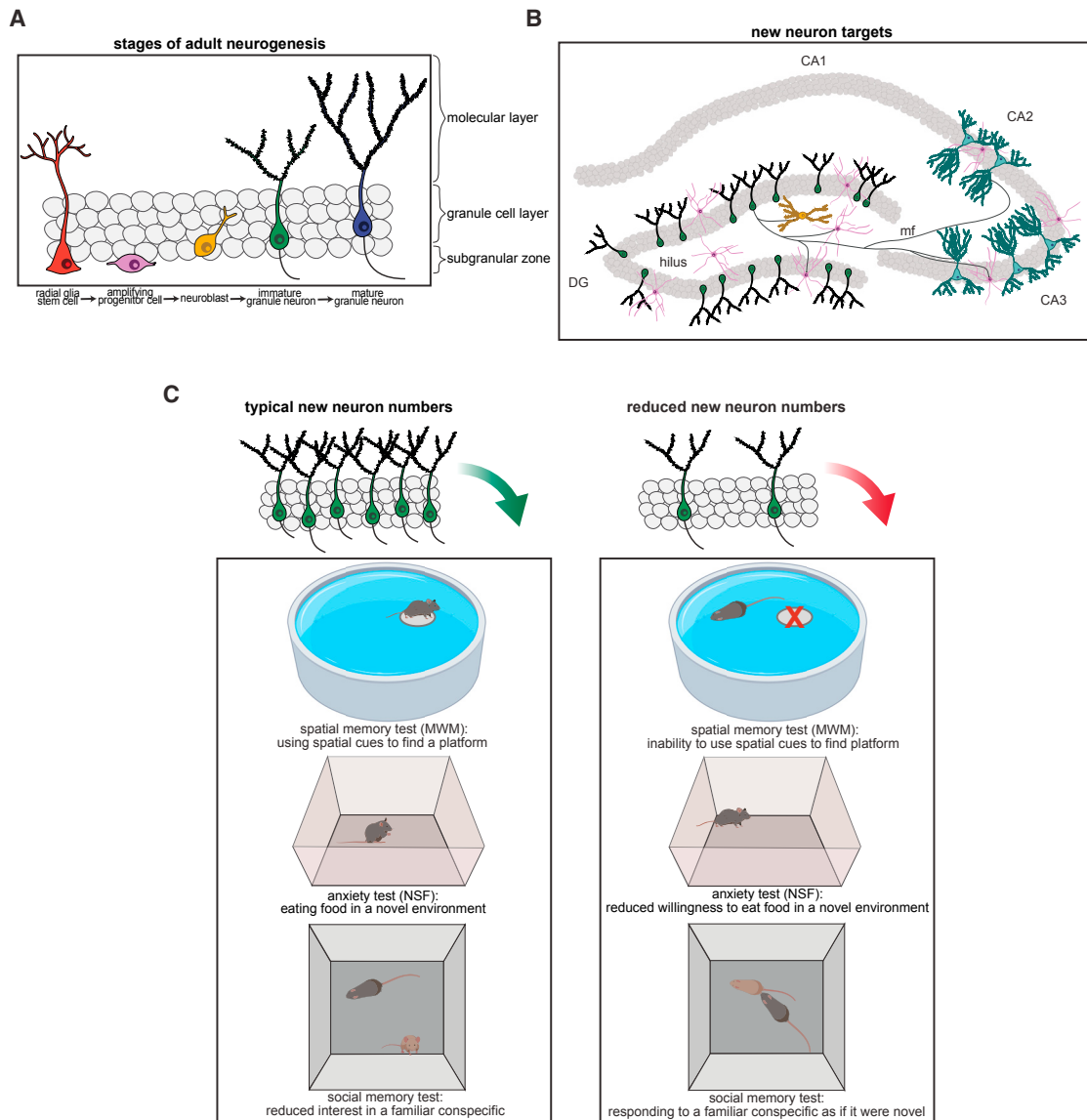


Figure 1. Overview of Adult Neurogenesis in the Hippocampus, the Circuitry into which the New Cells are Incorporated, and Their Involvement in Behavior

(A) Different stages of adult neurogenesis in the dentate gyrus (DG) of the hippocampus. New granule neurons originate from radial glial stem cells residing in the subgranular zone. These stem cells give rise to amplifying progenitor cells that in turn produce neuroblasts. The neuroblasts migrate into the granule cell layer and develop into immature granule neurons with a single dendritic tree extending toward the molecular layer and an axon extending through the hilus toward the CA3 and CA2 subfields.

(B) Schematic diagram of new neuron projections, showing the different hippocampal subfields (DG, CA3, CA2, and CA1) that serve as new neuron targets. Axons from new granule neurons (green cells), called mossy fibers (mf), form connections with hilar mossy cells (yellow cells), pyramidal cells in the CA3 and CA2 (blue cells), as well as with inhibitory interneurons (purple cells) in the DG, hilus, and CA3.

(C) New granule neurons have been linked to behaviors associated with the hippocampus, such as spatial navigation learning, anxiety and stress regulation, and social cognition. Compared to rodents with typical numbers of new neurons (left), rodents with reduced adult neurogenesis (right) are impaired on some cognitive tests (for example, unable to locate the location of a hidden platform in the Morris water maze, MWM), have atypical responses in anxiety tests (for example, different latencies to approach food in the novelty suppressed feeding task, NSF), and impaired social cognition (for example, inability to recognize previously encountered mice in a social interaction test).

local GABAergic inhibitory interneurons, local and cortical glutamatergic inputs, and basal forebrain/midbrain/hindbrain neuromodulatory (cholinergic, dopaminergic, noradrenergic) nuclei (Deshpande et al., 2013; Vivar et al., 2012). The formation of synapses onto new neurons is known to develop within a week or two of their generation, with the first inputs coming from local

GABAergic inhibitory interneurons (Espósito et al., 2005; Ge et al., 2006; Markwardt et al., 2009) followed by glutamatergic input from mossy cells in the hilus (Chancey et al., 2014) and then from the entorhinal cortex via the perforant path a few weeks later (Espósito et al., 2005; Ge et al., 2006). Neuromodulatory input to adult-generated neurons occurs later

(Deshpande et al., 2013; Vivar et al., 2012), as does the formation of mature inhibitory inputs from local inhibitory interneurons (Espósito et al., 2005), all of which strongly resemble those of developmentally generated granule cells within 4–6 weeks post-mitosis (Laplagne et al., 2006). On the output side, adult-generated granule cells form synapses with several populations of neurons within the hippocampus, including mossy cells in the hilus (Toni et al., 2008), pyramidal cells of the CA2 and CA3 regions (Llorens-Martín et al., 2015; Toni et al., 2008), as well as inhibitory interneurons in the dentate gyrus itself and the CA3 region (Drew et al., 2016; Restivo et al., 2015; Figure 1B).

Function of Adult-Generated Neurons

One of the defining characteristics of a neuron is its ability to generate action potentials. Electrophysiological studies of new cells produced in the adult dentate gyrus have shown that this capability emerges relatively quickly (within a week) post-mitosis. For some time thereafter, new granule cells exhibit excitatory, instead of inhibitory, responses to the typically inhibitory neurotransmitter GABA (Chancey et al., 2013), suggesting that these cells are more likely to fire than mature granule cells, which are strongly inhibited (Amaral et al., 2007; Pelkey et al., 2017). Adult-generated granule neurons also display other unusual electrophysiological properties that disappear as they reach full maturity, including enhanced synaptic plasticity with a lower threshold for LTP induction (Ge et al., 2007; Schmidt-Hieber et al., 2004). The heightened plasticity of adult-generated neurons makes them uniquely positioned to play a role in hippocampal-related functions, of which there are several candidates.

Although the hippocampus was originally recognized for its role in certain types of learning and memory (reviewed in Eichenbaum, 2017), it has also been found to play important roles in anxiety and stress regulation (reviewed in Fanselow and Dong, 2010; Kheirbek et al., 2013), as well as in certain aspects of social behavior (reviewed in Opendak and Gould, 2015). Studies have shown that different parts of the hippocampus serve these different functions, with the dorsal hippocampus supporting spatial navigation learning and memory, and the ventral hippocampus as important for anxiety and stress regulation (reviewed in Fanselow and Dong, 2010; Kheirbek et al., 2013). Because new neurons are generated throughout the dorsoventral extent of the dentate gyrus, the possibility that they might participate in more than one hippocampal function seems high. Indeed, adult-born neurons have been causally linked to many of the known functions and behaviors associated with the hippocampus. Much of this evidence comes from studies that knockdown or eliminate new neurons in the adult brain using transgenic, pharmacological, or focal x-irradiation approaches. Reports have shown that reduction of new neurons impairs cognitive performance on hippocampal-dependent tests, including object memory, contextual fear conditioning, as well as spatial learning and memory in the Morris water maze, Barnes maze, and radial arm maze (reviewed in Cameron and Glover, 2015; Gonçalves et al., 2016a; Figure 1C). On the other hand, contradictory studies have found either no effect of reduced neurogenesis on hippocampal cognitive tasks (Groves et al., 2013; Saxe et al., 2006) or only on certain types of hippocampal cognitive tests (Shors et al., 2002). One study even found that the absence of new neurons improves cognitive function (Saxe et al., 2007). New neurons, presumably through their unique elec-

trophysiological properties and sparse connections to CA3 neurons (Amaral et al., 2007), have also been found to participate in pattern separation (Clelland et al., 2009; Danielson et al., 2016; Sahay et al., 2011), the process of making similar neural inputs distinct. Elimination or optogenetic silencing of adult-born neurons impairs pattern separation-like behaviors (Clelland et al., 2009; Danielson et al., 2016), while transgenic increases in adult neurogenesis enhance the ability of mice to distinguish between highly similar contexts (Sahay et al., 2011). One study, however, reported that pattern separation-like behaviors did not differ between transgenic rats with reduced neurogenesis and controls with typical new neuron numbers (Groves et al., 2013). While reports from direct manipulations of adult neurogenesis often lack consistent results, the majority of studies suggest that new neurons are involved in some aspect of hippocampal-related cognition.

Reduced numbers of new neurons have also been associated with excessive anxiety (Revest et al., 2009), but most studies suggest that the role of new neurons in anxiety regulation only comes into play under conditions of stress (Figure 1C). Adult neurogenesis in the hippocampus seems to provide resilience to stress-induced anxiety (Anacker et al., 2018; Hill et al., 2015; Snyder et al., 2011). Studies have also shown impairments in social behavior tests in rodents lacking new neurons. Adult neurogenesis in the hippocampus has been shown to be necessary for stress-induced social avoidance (Lagace et al., 2010), as well as in social recognition memory (Garrett et al., 2015; Figure 1C). That is, mice with fewer new neurons seem unable to discriminate between novel and previously encountered mice (Garrett et al., 2015). Taken together, this evidence suggests that increased numbers of new neurons are associated with improved hippocampal function, while decreased numbers of new neurons are associated with deficient hippocampal function.

Paradoxical Effects of Adult Neurogenesis on Hippocampal Function

Some results from brain injury models suggest that a simple interpretation that more new neurons improve hippocampal function is not always the case. Brain injury models, such as stroke, seizure, and blunt trauma, all increase the rate of adult neurogenesis (Table 1), yet each of these conditions is associated with reduced cognitive function (Cuartero et al., 2019; Parent and Lowenstein, 2002; Sun et al., 2015). While damage-induced neurogenesis could be an adaptive mechanism to replace dead cells, the stroke and seizure literature does not support this hypothesis. In fact, inhibiting adult neurogenesis reduces the frequency of chronic seizures along with seizure-related cognitive decline (Cho et al., 2015) as well as stroke-induced cognitive decline (Cuartero et al., 2019). Because integration of new granule neurons into the dentate gyrus unavoidably modifies the existing synaptic circuitry, one possible interpretation of these paradoxical findings is that damage-induced adult neurogenesis leads to abnormal synaptic connectivity. In fact, seizures induce faster maturation of new granule neurons including early and more extensive mossy fiber sprouting and dendritic outgrowth as well as aberrant basal dendritic trees extending into the hilus, which receive recurrent excitatory drive from mossy fibers (Overstreet-Wadiche et al.,

Table 1. Effects of Experience and Pathological Conditions on Production, Survival, and Connectivity of New Neurons

Experience	Radial Glial Stem Cells (Type 1)	Amplifying Progenitor Cells (Type 2)	Neuroblasts (Type 3)	Cell Survival	Dendritic Maturation	Axons	References
Exercise	↑	↑	↑	↑	↑	↑	Kronenberg et al., 2006; Snyder et al., 2009b; Lugert et al., 2010; Bednarczyk et al., 2011; Ambrogini et al., 2013; Zhao et al., 2015; Llorens-Martín et al., 2015; Nokia et al., 2016
Enrichment	↑	↑	↑	↑	↑	N/A	Kempermann et al., 1997; Nilsson et al., 1999; Bednarczyk et al., 2011; Ambrogini et al., 2013; Vega-Rivera et al., 2016; Bolós et al., 2019
Stress	↓	↓	↓	↓	↓	N/A	Mirescu et al., 2004; Dagtè et al., 2009; Llorens-Martín et al., 2016; Opendak et al., 2016; De Miguel et al., 2018
Mating	N/A	↑	↑	↑	N/A	N/A	Leuner et al., 2010; Glasper and Gould, 2013; Kim et al., 2013
Parenting	N/A	↓	↓	↓	N/A	N/A	Darnaudéry et al., 2007; Leuner et al., 2007; Pawluski and Galea, 2007; Glasper et al., 2011; Hyer et al., 2016
Aging	↓	↓	↓	↓	↓	N/A	Kuhn et al., 1996; Ben Abdallah et al., 2010; Encinas et al., 2011; Trinchero et al., 2017
Antidepressant drugs	↔	↑	↑	↔	↑*↓	N/A	Malberg et al., 2000; Encinas et al., 2006; David et al., 2009; * Alves et al., 2017; Åmellem et al., 2017
Stroke	↑	↑	↑	↑	↑	↑	Walter et al., 2010; Cuartero et al., 2019
Seizure	↑	↑	↑	↑	↑	↑	Hüttmann et al., 2003; Jessberger et al., 2005, 2007; Overstreet-Wadiche et al., 2006; Lugert et al., 2010
Brain injury	↑	↑	↑	↑	↑	N/A	Dash et al., 2001; Villasana et al., 2015; Cope et al., 2016; Gu et al., 2016

*Refers to studies with differing effects.

2006; Shapiro and Ribak, 2006; Table 1). Moreover, accelerated and atypical excitatory and inhibitory synapse formation alters the excitability of the DG (Jakubs et al., 2006; Overstreet-Wadiche et al., 2006), which may be further exaggerated by the loss of inhibitory interneurons that often co-occurs with seizures (Kuruba et al., 2011). Some new granule neurons born after seizures abnormally migrate into the hilus/CA3 region where they atypically synchronize their firing activity with CA3 pyramidal cells (Scharfman et al., 2000).

Additional work examining an animal model of depression also produced results that raise questions about whether increased numbers of new neurons necessarily promote healthy hippocampal function. Treatment with the antidepressant fluoxetine resulted in an overproduction of new neurons in the adult hippocampus (Alves et al., 2017; Table 1). This effect, which at first glance appeared to be beneficial, was surprisingly associated with cognitive decline, as well as increased susceptibility to stress-induced depression and excessive anxiety (Alves et al., 2017). Pharmacological blockade of adult neurogenesis rescued the deleterious behavioral effects induced by antidepressant treatment strongly suggesting that in this case, the new neurons impaired hippocampal function (Alves et al., 2017). Closer examination of the granule neurons in this case revealed that along with increased numbers of new granule cells, granule cell dendritic trees were stunted and this likely impaired, instead of promoted, function. It is worth mentioning that these effects of antidepressants may not be limited to new granule neurons. One study showed that fluoxetine treatment causes dematuration

of mature granule neurons such that their functional characteristics resemble those of immature granule neurons (Kobayashi et al., 2010). Taken together with the findings from seizure and stroke studies, these data suggest the effect that new neurons have on behavior is not simply a direct linear relationship where more neurons necessarily leads to improved function. Instead, the findings emphasize the importance of new neuron connectivity in determining their influence over hippocampal circuitry. As introduced above, functionally relevant aspects of new neuron connectivity likely involve not only connections with other neurons, but also associations with glial cells and the ECM.

Rewarding Experiences Alter Adult Neurogenesis

Adult neurogenesis is highly sensitive to environmental stimuli, suggesting that new neurons may serve as an important substrate for experience-dependent change. Several experiences that are rewarding for rodents, such as voluntary physical exercise, environmental enrichment, and sexual experience, robustly enhance the number of new neurons (reviewed in Opendak and Gould, 2015). In some of these cases (e.g., physical exercise), evidence suggests that the number of new neurons is increased by actions at multiple stages in the adult neurogenesis process, including by stimulating the proliferation of radial stem cells and amplifying progenitor cells, leading to an increase in the production of neuroblasts (Bednarczyk et al., 2011; Kronenberg et al., 2006; Lugert et al., 2010; Nokia et al., 2016; Table 1). After these new cells are produced and start down the path toward neuronal differentiation, physical exercise enhances their survival, as it

increases the development of their dendrites, and the complexity of both their afferent and efferent connections (Ambrogini et al., 2013; Gonçalves et al., 2016b; Llorens-Martín et al., 2015; Snyder et al., 2009b; Zhao et al., 2015; Table 1). Given the positive influence physical exercise has over virtually all aspects of adult neurogenesis, it is not surprising that this experience also enhances function of the hippocampus. Indeed, numerous studies have shown that physical exercise improves performance on hippocampus-dependent cognitive tasks (reviewed in Vivar et al., 2013) and reduces anxiety-like behaviors (Schoenfeld et al., 2013). Studies have shown similar findings with enriched environment living, including enhanced stem cell production, progenitor cell proliferation, immature neuron production, cell survival, and dendritic differentiation (Ambrogini et al., 2013; Bednarczyk et al., 2011; Kempermann et al., 1997; Nilsson et al., 1999; Vega-Rivera et al., 2016; Table 1), although no studies yet have investigated how enriched environment living alters the formation of new connections by the axons of adult-generated neurons. Also along the lines of research on the effects of physical exercise, enriched environment living is associated with improved hippocampal function (reviewed in Simpson and Kelly, 2011). Studies have also investigated whether improved function after physical exercise or enriched environment living requires the increase in adult neurogenesis and those findings for the most part establish causality with regard to cognitive function with more unresponsive results in studies attempting to causally link new neurons with anxiety reduction (Brüel-Jungerman et al., 2005; Clark et al., 2008; Schoenfeld et al., 2016). These results are generally consistent with what is known about the effects of sexual experience in male rodents where increases in the numbers of adult-generated neurons have been reported (Glasper and Gould, 2013; Kim et al., 2013; Leuner et al., 2010; Table 1). However, this phenomenon has been explored much less thoroughly than physical exercise and enriched environment living, so its effects on stem cells and connectivity (afferent or efferent) remain uninvestigated (Table 1).

Aversive Experiences Alter Adult Neurogenesis

While rewarding experiences have been shown to enhance several aspects of adult neurogenesis, experiences that are aversive seem to have the opposite effect. Many different types of stress (social and physical) diminish the number of new neurons in the hippocampus (Dagytė et al., 2009; De Miguel et al., 2018; Llorens-Martín et al., 2016; Mirescu et al., 2004; Opendak et al., 2016). This effect can even be observed by taking an otherwise rewarding stimulus such as running and making it aversive (by using forced running or running in social isolation) (Inoue et al., 2015; Leasure and Decker, 2009; Stranahan et al., 2006). Although not to the extent of forced running, along these lines, the positive effects of physical exercise on adult neurogenesis are not further enhanced under conditions of rewarded running, which increases running wheel performance compared to voluntary running (Klaus et al., 2009). Stress seems to inhibit adult neurogenesis by having a suppressive action on the proliferation of radial stem cells and amplifying progenitors, leading to a reduction in neuroblasts (Dagytė et al., 2009; Mirescu et al., 2004; Opendak et al., 2016; Table 1). The survival of immature neurons can also be adversely affected by stress, as can their

dendritic differentiation and formation of appropriate afferent and efferent connections (De Miguel et al., 2018; Llorens-Martín et al., 2016; Opendak et al., 2016; Table 1). The general suppressive effects of stress on adult neurogenesis may be largely attributed to the catabolic actions of glucocorticoids, and the reduction in new neuron formation has been associated with impaired cognitive function (Bondi et al., 2008; Burgado et al., 2014). However, it should be noted that some studies have demonstrated no effects of stress on either anxiety-like behavior or cognitive function (Opendak et al., 2016), raising the possibility that reductions in new neuron number and connectivity may be compensated for by other mechanisms in some cases.

A link between declining adult neurogenesis and reduced hippocampal function has also been observed with aging where reduced cell proliferation and diminished adult neurogenesis in general are associated with age-related cognitive decline (Klemm and Kempermann, 2007; Table 1). However, it is important to point out that reduced adult neurogenesis occurs considerably before age-related cognitive decline, again suggesting the possibility of compensatory mechanisms, perhaps with regard to the strengthening of synapses that were formed earlier.

Social conditions that have both rewarding and aversive components also exert mixed effects on both adult neurogenesis and behavior. A good example of this is parenting, which is highly hedonic for rodents, has enriching effects on the brain, and is, at the same time, stressful, producing elevations in glucocorticoid levels. In both mothers and fathers, parenting has suppressive effects on adult neurogenesis (Darnaudéry et al., 2007; Glasper et al., 2011; Hyer et al., 2016; Leuner et al., 2007; Pawluski and Galea, 2007; Mahmoud et al., 2016). Behavioral studies have yielded mixed results for the effects of parenting on hippocampal-dependent cognition. In some cases, mothering has been shown to improve cognition (Darnaudéry et al., 2007; Gatewood et al., 2005; Kinsley et al., 1999) and in others, reduce cognition (Darnaudéry et al., 2007); whereas, fathering does not appear to affect performance on certain cognitive tasks (Glasper et al., 2011).

Experiential Regulation of New Neuron Connectivity

One way that experience may alter hippocampal function is by affecting the connectivity patterns of new neurons. Using viral-based methods, running has been found to increase the ratio of inhibitory interneuron versus excitatory mossy cell innervation onto new granule neurons (Sah et al., 2017; Vivar et al., 2016) as well as to enhance the number of new axon fibers projecting to the CA3 and CA2 subregions (Llorens-Martín et al., 2015). Afferent projections to immature neurons are also altered in mice housed in enriched conditions such that they have increased innervation by local inhibitory interneurons and long-distance cortical neurons compared to control mice (Bergami et al., 2015). Experiences that either increase neurogenesis, such as an environmental enrichment, or decrease adult neurogenesis, such as aging, also affect local inhibition levels (Drew et al., 2016). Physical exercise engages local inhibitory circuits that suppress new neurons in the ventral hippocampus and ultimately reduce stress-induced anxiety (Schoenfeld et al., 2013). In addition to its suppressive effects on adult neurogenesis, stress causes dendritic retraction on CA3 pyramidal neurons (Schoenfeld et al., 2017; reviewed in McEwen, 2018), one of the main targets of new granule neurons.

Transgenic reduction of adult neurogenesis also reduces dendritic complexity on CA3 pyramidal neurons (Schoenfeld et al., 2017). With regard to the function of new neurons, these data suggest that the complex effects of experience on brain function cannot be explained by merely knowing the numbers of new neurons, but instead must incorporate the effects of experience on the synaptic connectivity of new neurons.

Regulation of synaptic connectivity involves at least four main cellular or molecular components: the presynaptic neuron, postsynaptic neuron, glia, and the ECM, which together make up the “tetrapartite synapse” (Dityatev and Rusakov, 2011). It is likely that the functional influence new neurons have on the hippocampus arises from differences in their connectivity at the circuit level, as well as differences in the nonneuronal components that regulate their connections. Through their direct contact and/or secretion of factors, glia and the ECM participate in adult neurogenesis and the integration of new neurons into the hippocampal circuitry. At their presynaptic and postsynaptic sites, new granule cells interact with glial cells as well as with the ECM itself. Clearly, the relationship between adult neurogenesis and hippocampal function is complex, and understanding how these components function together at the tetrapartite synapse may elucidate mechanisms that best support new neuron integration into existing circuitry.

Glia Regulate New Neuron Number and Connectivity

Considerable evidence suggests that glia modulate adult neurogenesis in the hippocampus. Astrocytes within the adult hippocampus influence stem cell proliferation, their commitment to a neuronal phenotype, and their survival (Song et al., 2002), raising the possibility that there are distinct properties of astrocytes in the hippocampus that promote adult neurogenesis (Figure 2A). Mature astrocytes also aid in the differentiation and integration of adult-born neurons into the hippocampal circuitry. Blockade of vesicular release from astrocytes has been shown to impair new neuron survival and dendritic maturation by reducing dendritic branching and numbers of dendritic spines on new neurons (Sultan et al., 2015), suggesting that astrocytes are important regulators of adult neurogenesis at many stages in the process. Studies have shown that microglia have both beneficial and detrimental effects on adult neurogenesis in the hippocampus, depending on the circumstances. Microglia participate in stem cell proliferation and survival through their release of important trophic factors and anti-inflammatory cytokines (Battista et al., 2006; Borsini et al., 2015). Immune-deficient mice have impaired adult neurogenesis, even when housed in environmentally enriched conditions which typically increase stem cell proliferation, suggesting that immune molecules, potentially originating from microglia, are necessary for adult neurogenesis (Ziv et al., 2006). Microglia also participate in the adult neurogenesis process by engulfing stem or progenitor cells as well as immature neurons once they have died (Sierra et al., 2010; Figure 2A). In response to damage and disease, microglia transition to a proinflammatory state where they release cytokines, such as interleukin (IL)-1 β , 1L-6, and tumor necrosis factor alpha (TNF- α), which can impair new neuron production and cell survival (reviewed in Borsini et al., 2015; Figure 2A). One mechanism by which new neurons regulate the neurotoxic effects of microglia is through the binding of the neuronal chemokine fractalkine to

its microglial receptor Cx3cr1 (Cardona et al., 2006). Genetic disruption of Cx3cr1 decreases the number of new neurons (Bachstetter et al., 2011) supporting the importance of microglia-neuron communication in regulating adult neurogenesis.

Glia are also involved in synapse formation and elimination during development and although their involvement in this process has been less thoroughly investigated in the adult, it seems likely that they continue to do so throughout life. In the developing brain, peak synaptogenesis coincides with the differentiation and maturation of astrocytes (reviewed in Chung et al., 2015). Astrocytes secrete several regulatory factors that affect presynaptic and postsynaptic maturation (Christopherson et al., 2005; Kucukdereli et al., 2011; Figure 2B). Microglia have also been shown to play a role in synapse formation and maintenance through their direct contact with synapses as well as from their secretion of growth factors and cytokines (Figure 2B). Time-lapse imaging of microglia has shown that microglial contacts with dendrites induce spine formation in hippocampal cultures (Weinhard et al., 2018), suggesting that microglia may aid in reorganization of postsynaptic sites to produce more efficient synapses. Addition of microglia to hippocampal cultures increases the number of both excitatory and inhibitory synapses through release of IL-10 (Lim et al., 2013). In addition to their stimulatory effects on synapses, microglia play an important role in synapse elimination by phagocytosis (Paolicelli et al., 2011; Schafer et al., 2012) after the recognition of immune complement proteins on weak synapses (Schafer et al., 2012; Figure 2B). Recent work has provided direct evidence for partial phagocytosis of presynaptic sites via time-lapse light sheet imaging of microglia-synaptic interactions in organotypic hippocampal cultures (Weinhard et al., 2018). Astrocytes also participate in circuit refinement by synaptic engulfment of both inhibitory and excitatory synapses through MEGF10 and MERTK pathways during development and in adulthood (Chung et al., 2013; Figure 2B). Astrocytic secretion of transforming growth factor β (TGF- β) regulates complement expression to initiate microglial-induced synaptic elimination (Bialas and Stevens, 2013).

Examination of afferent and efferent synapses of adult-born neurons has shown that astrocytic processes ensheath synapses from adult-born neurons (Krzisch et al., 2015), suggesting that astrocytes likely regulate synaptic signaling between new hippocampal neurons and their connections. *In vivo* imaging studies of astrocytes have shown that astrocytes are sensitive to changes in neural activity and respond with increases in intracellular calcium levels (Wang et al., 2006; Winship et al., 2007). Through their release of signaling molecules such as glutamate, ATP, d-serine, or GABA, as well as trophic factors, astrocytes influence synaptic activity at certain synapses, a process known as gliotransmission (reviewed in Harada et al., 2016; Parpura and Zorec, 2010; Figure 2B). Microglia also closely monitor neural activity and regulate synaptic plasticity. The highly motile processes of microglia are constantly surveying the brain (Nimmerjahn et al., 2005) and make frequent contacts with synapses (Tremblay et al., 2010). Similar to astrocytes, microglia express many neurotransmitter receptors such as glutamate and purinergic receptors that sense changes in neural activity (York et al., 2018). Microglia respond to increases in neural activity in the hippocampus by increasing their process numbers and prolonging their contact with synapses (Pfeiffer et al., 2016), and releasing

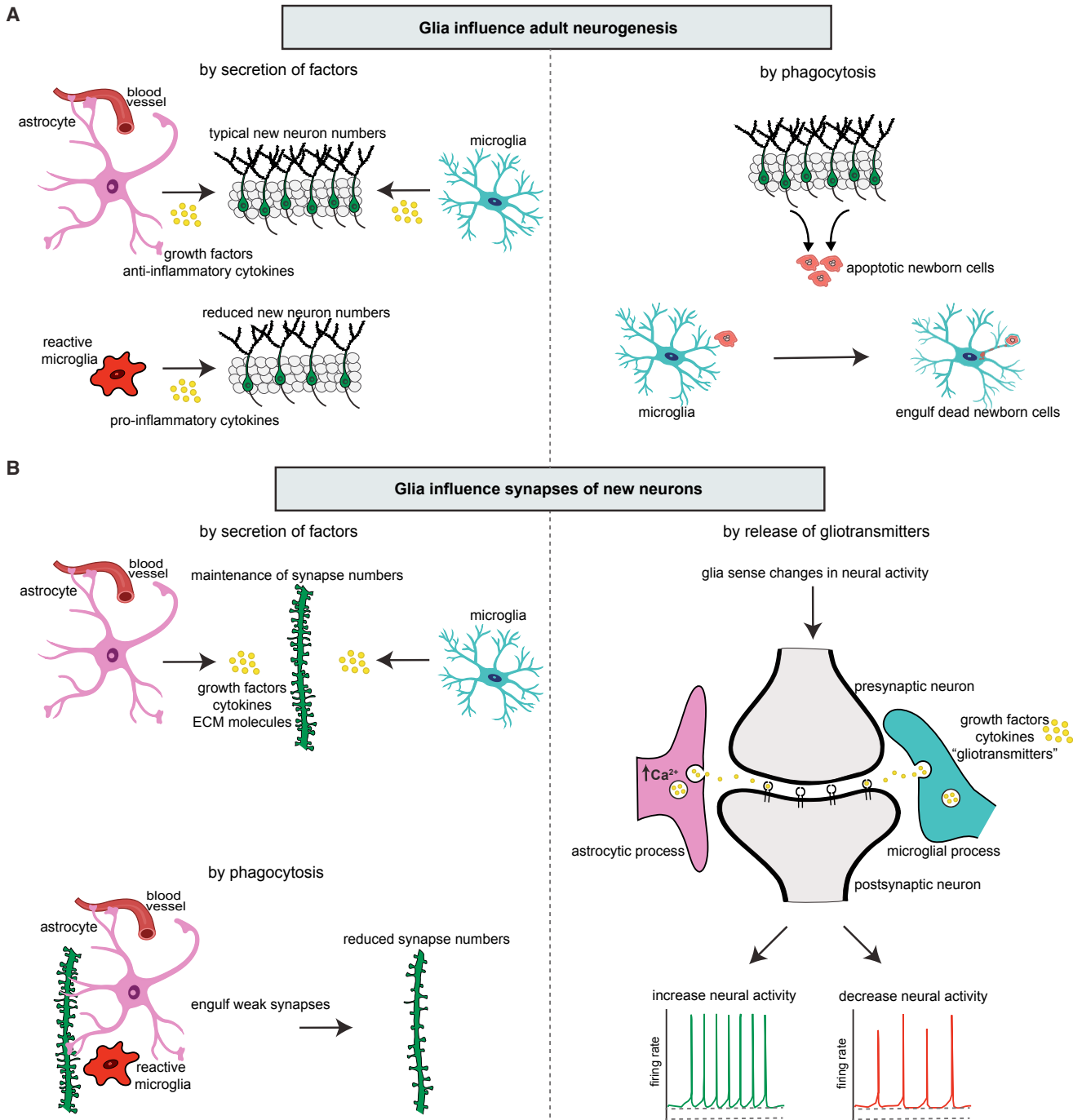


Figure 2. Glia Influence Adult Neurogenesis and Synaptic Connections Formed by New Neurons

(A) Mechanisms of glial influence on adult neurogenesis. Through their secretion of growth factors and anti-inflammatory cytokines, astrocytes and microglia promote adult neurogenesis. Under pathological conditions, reactive microglia produce inflammatory cytokines that impair adult neurogenesis. Microglia also participate in adult neurogenesis by phagocytosing new neurons after they have died, under healthy and unhealthy conditions.

(B) Mechanisms of glial influence on new neuron synapses. Astrocytes and microglia participate in regulating synapse number by secreting growth factors, cytokines, and ECM molecules. Astrocytes and microglia also shape neural circuits by engulfing weak synapses through phagocytosis. Glia modulate synaptic transmission by sensing changes in synaptic activity and releasing growth factors, cytokines, and/or gliotransmitters which, in turn, increase or decrease neural activity.

factors such as TNF- α or IL-1 β , both of which influence synaptic plasticity (Prieto et al., 2019; Stellwagen and Malenka, 2006; Figure 2B). Available evidence indicates that astrocytes and

microglia play a role in adult neurogenesis, but the extent to which these cells influence functional connectivity of new neurons remains incompletely explored.

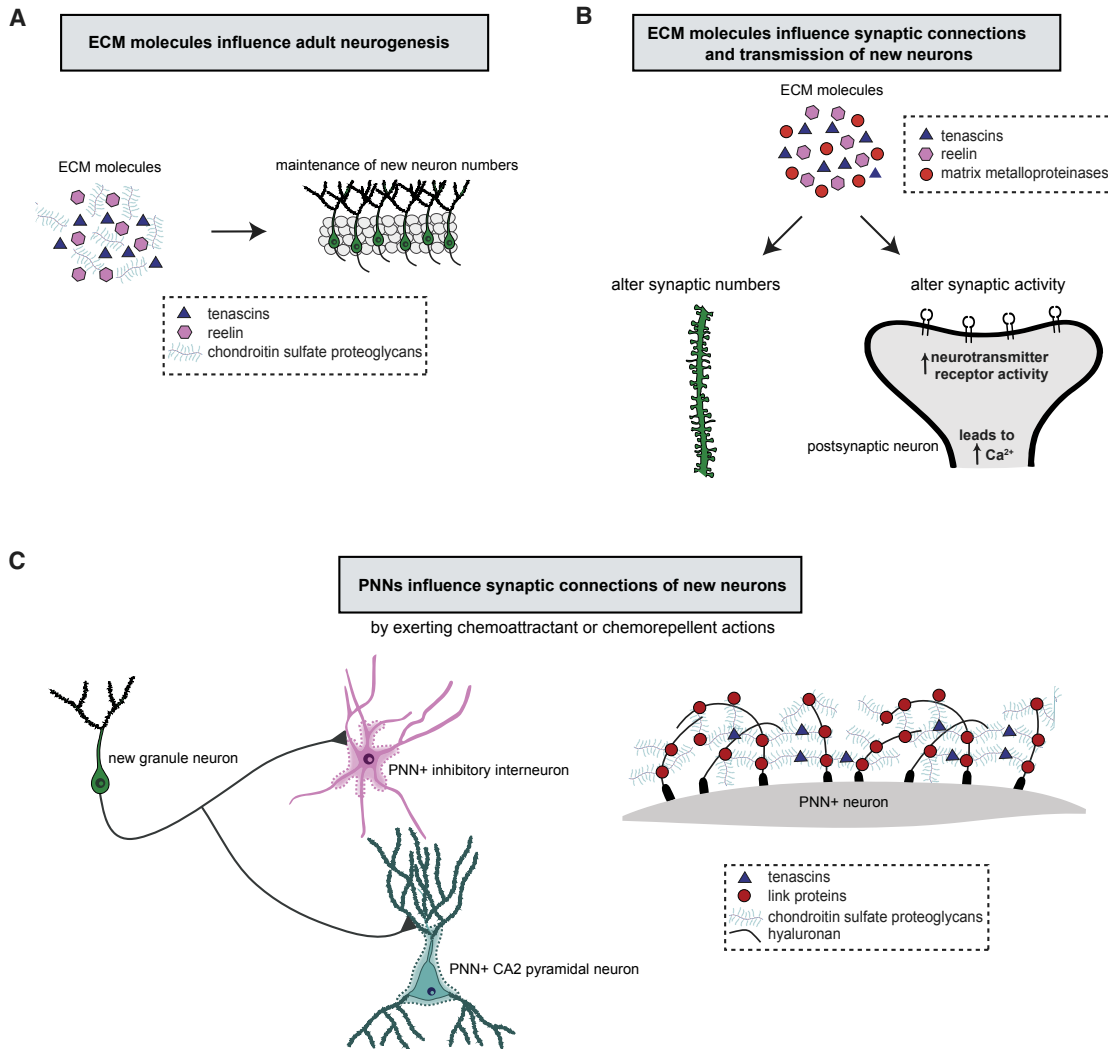


Figure 3. The Extracellular Matrix Influences Adult Neurogenesis and the Synaptic Connections Formed by New Neurons

(A) Extracellular matrix (ECM) molecules such as tenascins, reelin, and chondroitin sulfate proteoglycans promote adult neurogenesis. (B) ECM influences new neuron connections and synaptic transmission. ECM molecules participate in the formation and stability of synapses, and through their interactions with cell surface receptors, influence synaptic activity by increasing neurotransmitter receptor activity, which increases intracellular calcium levels and enhances neural activity. (C) Specialized ECM structures, perineuronal nets (PNNs), which enwrap the cell body and proximal dendrites of hippocampal inhibitory interneurons and CA2 pyramidal cells, may attract or repel mossy fibers from new neurons.

Extracellular Matrix Regulation of New Neuron Number and Connectivity

Accumulating evidence suggests a role for the ECM in adult neurogenesis, as well as synaptogenesis and synaptic signaling. Approximately 20% of the brain's volume is composed of ECM (Nicholson et al., 2011). ECM molecules are expressed in a diffuse manner throughout the brain in areas adjacent to and between synapses. The ECM aids in the communication between neurons and glial cells by incorporating their secreted signaling molecules into the extracellular space where they interact with other ECM molecules and/or cell surface receptors (Dityatev and Rusakov, 2011). In addition to the loose ECM molecules, the ECM can form distinct organized structures called perineuronal nets (PNNs). PNNs are lattice-like structures that form around the cell body and proximal dendrites of certain types of neurons

(van 't Spijker and Kwok, 2017) and have been implicated in synaptic stabilization in the adult brain (Lensjø et al., 2017a).

Chondroitin sulfate proteoglycans, structural ECM components, are known to surround new neurons in the hippocampus, and recent work has shown that these molecules are important for the production and differentiation of new neurons in adulthood (Yamada et al., 2018). Depletion of chondroitin sulfate proteoglycans in the hippocampus decreases new neuron formation and dendritic tree maturation, and produces cognitive impairment (Figure 3A). Environmental enrichment-induced increases in adult neurogenesis are associated with increased synthesis of chondroitin sulfate proteoglycans, which is prevented by chondroitin sulfate proteoglycan synthesis disruption (Yamada et al., 2018). Chondroitin sulfate proteoglycans bind neurotrophic factors such as FGF-2 and BDNF (Karumbaiah

et al., 2015), which may facilitate the local potency of growth factors on adult-born neurons.

Reelin, an ECM glycoprotein secreted by GABAergic interneurons in the adult brain (Pesold et al., 1998), has been shown to play a critical role in neuronal migration and synaptic plasticity (reviewed in Lee and D'Arcangelo, 2016). In the adult mouse hippocampus, reelin deficiency inhibits neurogenesis (Won et al., 2006), while reelin overexpression stimulates neurogenesis (Pujadas et al., 2010; Figure 3A). Using hippocampal slice culture and live imaging from wild-type and reelin-deficient mice, reelin acts as an attractant to control the migration direction of new granule neurons toward the molecular layer (Wang et al., 2018). Disruption of reelin signaling in hippocampal stem cells causes aberrant migration such that new granule neurons are scattered throughout the dentate gyrus area, where they form abnormal dendrites (Teixeira et al., 2012). In the developing and adult brain, evidence suggests that reelin is an important mediator of circuit formation by regulating dendritic tree maturation, spine formation and stability, glutamatergic neurotransmission, and synaptic plasticity (Pujadas et al., 2010; Figure 3B). Overexpression of reelin accelerates dendritic development of adult-born neurons and increases the number of synaptic contacts in the dentate gyrus (Pujadas et al., 2010; Teixeira et al., 2012), whereas the absence of reelin signaling reduces dendritic tree complexity on new granule neurons (Teixeira et al., 2012). The reelin pathway also participates in the integration of adult-born neurons into the hippocampal circuitry by regulating spine morphology, spine type, and the number of synaptic connections on new granule neurons as well as the degree of perisynaptic astroglial ensheathment of new granule neuron synapses (Bosch et al., 2016). Reelin is also known to enhance hippocampal synaptic plasticity (Pujadas et al., 2010; Weeber et al., 2002) by altering the composition of NMDA receptor subunits and promoting surface clustering of AMPA receptors (Qiu et al., 2006; Figure 3B).

Active extracellular proteases, such as matrix metalloproteinases (MMPs), play key roles in driving plasticity in response to changes in neural activity by degrading components of the ECM (Ferrer-Ferrer and Dityatev, 2018). MMPs can modulate structural plasticity by loosening the ECM structure allowing for a more permissive environment. For instance, the ECM may spatially restrict microglial and astrocytic processes from invading the perisynaptic space, thus ECM remodeling may prompt invasion of glial cells, which in turn may regulate synaptic signaling. One of the most widely studied MMPs in the adult hippocampus, MMP9, is involved in hippocampal synaptic plasticity. Enhanced neural activity in the hippocampus increases the active form of MMP9 into the perisynaptic space (Bozdagi et al., 2007; Nagy et al., 2006; Wiera et al., 2013). Mice deficient in MMP9 have impaired hippocampal LTP, including at mossy fiber-CA3 synapses, which is restored by adding recombinant active MMP9 (Nagy et al., 2006; Wiera et al., 2013). Although the role of MMPs in adult neurogenesis has only been explored in damage models (Wójcik-Stanaszek et al., 2011), it seems plausible that these molecules play similar roles under intact conditions.

Tenascin-R, an ECM glycoprotein, is also important for new neuron production and synaptic plasticity in the adult hippocampus. The functional activity of tenascin stems from its interaction with other ECM proteins and receptors (Jones and Jones, 2000).

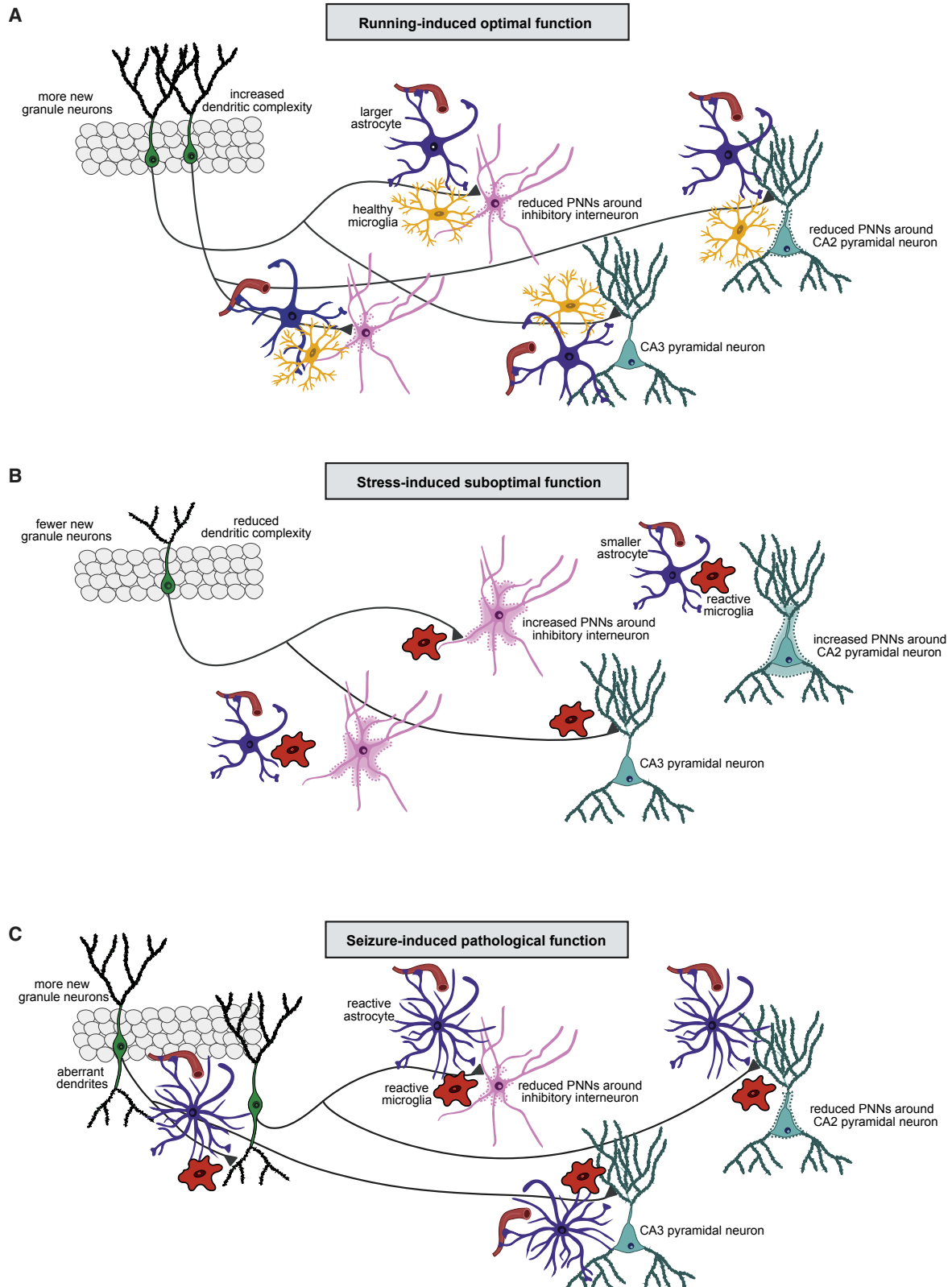
In neural stem cultures, tenascin-R has been shown to modulate proliferation and differentiation of neural stem cells through interactions with the cell-surface receptor $\beta 1$ integrin (Liao et al., 2008). In the developing and adult hippocampus, tenascin-R deficiency reduces the number of proliferating stem cells, while increasing the number of cells committed to a neuronal phenotype (Xu et al., 2014). Several studies have shown that tenascin-R knockout mice have altered synaptic plasticity in the hippocampus, including impaired LTP and increased basal excitatory transmission (Bukalo et al., 2001; Gurevicius et al., 2004; Saghatelian et al., 2001). Studies suggest that tenascins are a critical component of PNNs (Suttkus et al., 2014), which surround many of the neurons that are postsynaptic to adult-generated granule cells.

Potential Role for Perineuronal Nets in New Neuron Connectivity

PNNs are specialized extracellular structures composed of tenascin-R, hyaluronan, chondroitin sulfate proteoglycans, and link proteins (Figure 3C), which play important roles in brain plasticity during development and in adulthood (Sorg et al., 2016). In the hippocampus, PNNs primarily surround inhibitory interneurons, many of which are fast-spiking PV⁺ interneurons (Lensjø et al., 2017b; Yamada et al., 2015). In the CA2 subregion, however, PNNs also enwrap excitatory pyramidal cells (Carstens et al., 2016). In general, PNNs restrain plasticity and promote synaptic stabilization in the adult brain. The maturation of PNNs in the developing cortex visual coincides with the closure of the critical periods of synaptogenesis and circuit refinement (Beurdeley et al., 2012; Ye and Miao, 2013). Accumulating evidence suggests that PNN formation is driven by neuronal activity (Dityatev et al., 2007) and one possibility is that changes in the number of new neurons, which alter the overall excitability of the hippocampus (Ikhar et al., 2013), may then regulate the expression of PNNs at postsynaptic sites. In addition to glutamatergic input, new granule neurons also receive local inhibitory input (Espósito et al., 2005; Ge et al., 2006), and inhibitory control of new neurons may be indirectly altered through the expression of PNNs on PV⁺ interneurons. Because activation of PV⁺ interneurons has been shown to promote new neuron cell survival while suppression of PV⁺ interneuron activity reduces new neuron cell survival (Song et al., 2013), changes in PNNs surrounding these cells may have an important influence on adult neurogenesis. However, despite their compelling association with cells in the adult neurogenesis hippocampal circuitry, as well as their identified functional roles in other neural systems, PNNs have been relatively uninvestigated in the context of adult neurogenesis.

Proposed Models and Remaining Questions

It has become increasingly clear that the connectivity of new neurons in the adult hippocampus is highly relevant to their functional influence. All components of the synapse, including glia, the ECM, and the presynaptic and postsynaptic neurons should be considered in an effort to elucidate the diverse effects new neurons have on brain function. In addition to adult-generated neurons themselves, associated glial cells and ECM are differentially sensitive to experience and pathological conditions (reviewed in Ruddy and Morshead, 2018). Glial cells play important roles in the production and elimination of synaptic



(legend on next page)

connections, while PNNs may attract or repel axons of new neurons. Experience-dependent or pathological disruptions in glial cells or PNNs most likely produce abnormal connectivity of new neurons and therefore impaired hippocampal function.

Many studies have shown that glial cells as well as PNNs are influenced by experience. Physical exercise, which increases new neuron production and improves behaviors associated with the hippocampus, also stimulates astrocyte growth (Brockett et al., 2015; Fahimi et al., 2017) and reduces microglial reactivity (Kohman et al., 2012, 2013). Rats given access to running wheels also have decreased PNN expression in the hippocampus (Smith et al., 2015b). Stress, on the other hand, which diminishes adult neurogenesis and impairs hippocampal function, has been shown to reduce the size and number of astrocytes (Czéh et al., 2006; Tynan et al., 2013) as well as to trigger microglial reactivity (Kreisel et al., 2014; Llorens-Martín et al., 2016). Early life stress in mice has been shown to increase PNNs surrounding PV⁺ inhibitory interneurons in the hippocampus (Murthy et al., 2019). Because physical exercise and stress have for the most part opposite effects on adult neurogenesis, synaptic connectivity, and behavior, it is perhaps not surprising that these experiences also have different effects on glia and PNN structures. For example, under optimal function conditions as observed with physical exercise, healthy glial cells and reduced PNNs may enhance new neuron connections with their target cells (Figure 4A), while under suboptimal function conditions as observed with stress, changes in glial cells along with increased PNNs may prevent these connections from forming appropriately with their target cells (Figure 4B).

Examination of disease models adds further complexity about how alterations in glia, ECM, and specifically PNNs, lead to dysfunctional circuits associated with adult neurogenesis. For example, seizures stimulate adult neurogenesis and impair hippocampal function. Seizure-induced reactive astrocytes (Shapiro et al., 2008; Yang et al., 2010), reactive microglia (Shapiro et al., 2008; Yang et al., 2010), and reduced presence of PNNs (McRae and Porter, 2012; Rankin-Gee et al., 2015) around post-synaptic neurons of adult-generated cells likely contribute to the functional impairments. The combination of increased adult neurogenesis along with glial reactivity and reduced PNNs may set the stage for improper new neuron connections with their targets and ultimately, impaired hippocampal function (Figure 4C). Clearly, additional research is needed to understand how adult-generated neurons in the hippocampus participate in optimal, suboptimal, and pathological functional outcomes and considering their connections in the tetrapartite synapse is likely a step in the right direction.

ACKNOWLEDGMENTS

We thank Jessica Verpeut and Biorender for assistance with the figures. We also thank Adam T. Brockett, Blake J. Laham, and Sahana Murthy for their helpful comments and advice on the manuscript. This work was supported by NIH (MH117459-01 to E.G. and T32MH065214 training fellowship to E.C.C.).

REFERENCES

- Alves, N.D., Correia, J.S., Patricio, P., Mateus-Pinheiro, A., Machado-Santos, A.R., Loureiro-Campos, E., Morais, M., Bessa, J.M., Sousa, N., and Pinto, L. (2017). Adult hippocampal neuroplasticity triggers susceptibility to recurrent depression. *Transl. Psychiatry* 7, e1058.
- Amaral, D.G., Scharfman, H.E., and Lavenex, P. (2007). The dentate gyrus: fundamental neuroanatomical organization (dentate gyrus for dummies). *Prog. Brain Res.* 163, 3–22.
- Ambrogini, P., Lattanzi, D., Ciuffoli, S., Betti, M., Fanelli, M., and Cuppini, R. (2013). Physical exercise and environment exploration affect synaptogenesis in adult-generated neurons in the rat dentate gyrus: possible role of BDNF. *Brain Res.* 1534, 1–12.
- Åmellem, I., Suresh, S., Chang, C.C., Tok, S.S.L., and Tashiro, A. (2017). A critical period for antidepressant-induced acceleration of neuronal maturation in adult dentate gyrus. *Transl. Psychiatry* 7, e1235.
- Anacker, C., Luna, V.M., Stevens, G.S., Millette, A., Shores, R., Jimenez, J.C., Chen, B., and Hen, R. (2018). Hippocampal neurogenesis confers stress resilience by inhibiting the ventral dentate gyrus. *Nature* 559, 98–102.
- Bachstetter, A.D., Morganti, J.M., Jernberg, J., Schlunk, A., Mitchell, S.H., Brewster, K.W., Hudson, C.E., Cole, M.J., Harrison, J.K., Bickford, P.C., and Gemma, C. (2011). Fractalkine and CX3 CR1 regulate hippocampal neurogenesis in adult and aged rats. *Neurobiol. Aging* 32, 2030–2044.
- Battista, D., Ferrari, C.C., Gage, F.H., and Pitossi, F.J. (2006). Neurogenic niche modulation by activated microglia: transforming growth factor β increases neurogenesis in the adult dentate gyrus. *Eur. J. Neurosci.* 23, 83–93.
- Bednarczyk, M.R., Hacker, L.C., Fortin-Nunez, S., Aumont, A., Bergeron, R., and Fernandes, K.J.L. (2011). Distinct stages of adult hippocampal neurogenesis are regulated by running and the running environment. *Hippocampus* 21, 1334–1347.
- Ben Abdallah, N.M.B., Slomianka, L., Vyssotski, A.L., and Lipp, H.P. (2010). Early age-related changes in adult hippocampal neurogenesis in C57 mice. *Neurobiol. Aging* 31, 151–161.
- Bergami, M., Masserdotti, G., Temprana, S.G., Motori, E., Eriksson, T.M., Göbel, J., Yang, S.M., Conzelmann, K.K., Schinder, A.F., Götz, M., and Berninger, B. (2015). A critical period for experience-dependent remodeling of adult-born neuron connectivity. *Neuron* 85, 710–717.
- Beurdeley, M., Spatazza, J., Lee, H.H.C., Sugiyama, S., Bernard, C., Di Nardo, A.A., Hensch, T.K., and Prochiantz, A. (2012). Otx2 binding to perineuronal nets persistently regulates plasticity in the mature visual cortex. *J. Neurosci.* 32, 9429–9437.
- Bialas, A.R., and Stevens, B. (2013). TGF- β signaling regulates neuronal C1q expression and developmental synaptic refinement. *Nat. Neurosci.* 16, 1773–1782.

Figure 4. Models of New Neuron Connectivity under Optimal, Suboptimal, and Pathologically Dysfunctional States

- (A) Long-term physical exercise improves cognitive function and reduces anxiety. Optimization of hippocampus function may be achieved through the stimulation of adult neurogenesis, with the production of more new granule cells, each with more extensive dendritic trees and increased numbers of dendritic spines. New granule neurons form more connections with their targets, including inhibitory interneurons and CA2/CA3 pyramidal cells. Reduced PNNs along with healthy glial cells surrounding new synapses promote healthy new granule neuron connections with their target cells.
- (B) Chronic stress diminishes cognitive function and increases anxiety. Suboptimal function of the hippocampus occurs as a result of suppressed adult neurogenesis, with the production of fewer new granule cells, each with stunted dendritic trees and reduced numbers of dendritic spines. Stress-induced increases in PNNs along with alterations in glial cells (fewer astrocytes and reactive microglia) prevent healthy new granule neuron connections with their target cells.
- (C) Seizures significantly impair cognitive function and increase anxiety. Pathological function of the hippocampus results from the paradoxical production of more new granule neurons, each with more extensive dendritic branching and increased numbers of dendritic spines. These new neurons are often located ectopically and have an aberrant basal dendritic tree extending into the hilus. These abnormalities impair integration by causing recurrent excitatory connections with other new granule neurons. Reduced PNNs along with reactive astrocytes and reactive microglia prevent the formation of healthy connections between new neurons and their target cells.

- Boldrini, M., Fulmore, C.A., Tartt, A.N., Simeon, L.R., Pavlova, I., Poposka, V., Rosoklija, G.B., Stankov, A., Arango, V., Dwork, A.J., et al. (2018). Human hippocampal neurogenesis persists throughout aging. *Cell Stem Cell* 22, 589–599.
- Bolós, M., Terreros-Roncal, J., Perea, J.R., Pallas-Bazarra, N., Ávila, J., and Llorens-Martín, M. (2019). Maturation dynamics of the axon initial segment (AIS) of newborn dentate granule cells in young adult C57BL/6J mice. *J. Neurosci.* 39, 1605–1620.
- Bonaguidi, M.A., Wheeler, M.A., Shapiro, J.S., Stadel, R.P., Sun, G.J., Ming, G.L., and Song, H. (2011). In vivo clonal analysis reveals self-renewing and multipotent adult neural stem cell characteristics. *Cell* 145, 1142–1155.
- Bondi, C.O., Rodriguez, G., Gould, G.G., Frazer, A., and Morilak, D.A. (2008). Chronic unpredictable stress induces a cognitive deficit and anxiety-like behavior in rats that is prevented by chronic antidepressant drug treatment. *Neuropsychopharmacology* 33, 320–331.
- Borsini, A., Zunszain, P.A., Thuret, S., and Pariante, C.M. (2015). The role of inflammatory cytokines as key modulators of neurogenesis. *Trends Neurosci.* 38, 145–157.
- Bosch, C., Masachs, N., Exposito-Alonso, D., Martínez, A., Teixeira, C.M., Fernaud, I., Pujadas, L., Ulloa, F., Comella, J.X., DeFelipe, J., et al. (2016). Reelin regulates the maturation of dendritic spines, synaptogenesis and glial ensheathment of newborn granule cells. *Cereb. Cortex* 26, 4282–4298.
- Bozdagi, O., Nagy, V., Kwei, K.T., and Huntley, G.W. (2007). In vivo roles for matrix metalloproteinase-9 in mature hippocampal synaptic physiology and plasticity. *J. Neurophysiol.* 98, 334–344.
- Brockett, A.T., LaMarca, E.A., and Gould, E. (2015). Physical exercise enhances cognitive flexibility as well as astrocytic and synaptic markers in the medial prefrontal cortex. *PLoS ONE* 10, e0124859.
- Bruel-Jungerman, E., Laroche, S., and Rampon, C. (2005). New neurons in the dentate gyrus are involved in the expression of enhanced long-term memory following environmental enrichment. *Eur. J. Neurosci.* 21, 513–521.
- Bukalo, O., Schachner, M., and Dityatev, A. (2001). Modification of extracellular matrix by enzymatic removal of chondroitin sulfate and by lack of tenascin-R differentially affects several forms of synaptic plasticity in the hippocampus. *Neuroscience* 104, 359–369.
- Burgado, J., Harrell, C.S., Eacret, D., Reddy, R., Barnum, C.J., Tansey, M.G., Miller, A.H., Wang, H., and Neigh, G.N. (2014). Two weeks of predatory stress induces anxiety-like behavior with co-morbid depressive-like behavior in adult male mice. *Behav. Brain Res.* 275, 120–125.
- Cameron, H.A., and Glover, L.R. (2015). Adult neurogenesis: beyond learning and memory. *Annu. Rev. Psychol.* 66, 53–81.
- Cameron, H.A., and McKay, R.D. (2001). Adult neurogenesis produces a large pool of new granule cells in the dentate gyrus. *J. Comp. Neurol.* 435, 406–417.
- Cardona, A.E., Piore, E.P., Sasse, M.E., Kostenko, V., Cardona, S.M., Dijkstra, I.M., Huang, D., Kidd, G., Dombrowski, S., Dutta, R., et al. (2006). Control of microglial neurotoxicity by the fractalkine receptor. *Nat. Neurosci.* 9, 917–924.
- Carstens, K.E., Phillips, M.L., Pozzo-Miller, L., Weinberg, R.J., and Dudek, S.M. (2016). Perineuronal Nets Suppress Plasticity of Excitatory Synapses on CA2 Pyramidal Neurons. *J. Neurosci.* 36, 6312–6320.
- Chancey, J.H., Adlaf, E.W., Sapp, M.C., Pugh, P.C., Wadiche, J.I., and Overstreet-Wadiche, L.S. (2013). GABA depolarization is required for experience-dependent synapse unsilencing in adult-born neurons. *J. Neurosci.* 33, 6614–6622.
- Chancey, J.H., Poulsen, D.J., Wadiche, J.I., and Overstreet-Wadiche, L. (2014). Hilar mossy cells provide the first glutamatergic synapses to adult-born dentate granule cells. *J. Neurosci.* 34, 2349–2354.
- Cho, K.O., Lybrand, Z.R., Ito, N., Brulet, R., Tafacory, F., Zhang, L., Good, L., Ure, K., Kerner, S.G., Birnbaum, S.G., et al. (2015). Aberrant hippocampal neurogenesis contributes to epilepsy and associated cognitive decline. *Nat. Commun.* 6, 6606.
- Christopherson, K.S., Ullian, E.M., Stokes, C.C.A., Mallowney, C.E., Hell, J.W., Agah, A., Lawler, J., Moshier, D.F., Bornstein, P., and Barres, B.A. (2005). Thrombospondins are astrocyte-secreted proteins that promote CNS synaptogenesis. *Cell* 120, 421–433.
- Chung, W.S., Clarke, L.E., Wang, G.X., Stafford, B.K., Sher, A., Chakraborty, C., Joung, J., Foo, L.C., Thompson, A., Chen, C., et al. (2013). Astrocytes mediate synapse elimination through MEGF10 and MERTK pathways. *Nature* 504, 394–400.
- Chung, W.-S., Allen, N.J., and Eroglu, C. (2015). Astrocytes control synapse formation, function, and elimination. *Cold Spring Harb. Perspect. Biol.* 7, a020370.
- Cipriani, S., Ferrer, I., Aronica, E., Kovacs, G.G., Verney, C., Nardelli, J., Khung, S., Delezoide, A.L., Milenkovic, I., Rasika, S., et al. (2018). Hippocampal radial glial subtypes and their neurogenic potential in human fetuses and healthy and Alzheimer's Disease adults. *Cereb. Cortex* 28, 2458–2478.
- Clark, P.J., Brzezinska, W.J., Thomas, M.W., Ryzhenko, N.A., Toshkov, S.A., and Rhodes, J.S. (2008). Intact neurogenesis is required for benefits of exercise on spatial memory but not motor performance or contextual fear conditioning in C57BL/6J mice. *Neuroscience* 155, 1048–1058.
- Clelland, C.D., Choi, M., Romberg, C., Clemenson, G.D., Jr., Fagniere, A., Tyers, P., Jessberger, S., Saksida, L.M., Barker, R.A., Gage, F.H., and Bussey, T.J. (2009). A functional role for adult hippocampal neurogenesis in spatial pattern separation. *Science* 325, 210–213.
- Cope, E.C., Morris, D.R., Gower-Winter, S.D., Brownstein, N.C., and Levenson, C.W. (2016). Effect of zinc supplementation on neuronal precursor proliferation in the rat hippocampus after traumatic brain injury. *Exp. Neurol.* 279, 96–103.
- Cuartero, M.I., de la Parra, J., Pérez-Ruiz, A., Bravo-Ferrer, I., Durán-Laforet, V., García-Culebras, A., García-Segura, J.M., Dhaliwal, J., Frankland, P.W., Lizasoain, I., and Moro, M.A. (2019). Abolition of aberrant neurogenesis ameliorates cognitive impairment after stroke in mice. *J. Clin. Invest.* 129, 1536–1550.
- Czéh, B., Simon, M., Schmelting, B., Hiemke, C., and Fuchs, E. (2006). Astroglial plasticity in the hippocampus is affected by chronic psychosocial stress and concomitant fluoxetine treatment. *Neuropsychopharmacology* 31, 1616–1626.
- Dagytė, G., Van der Zee, E.A., Postema, F., Luiten, P.G.M., Den Boer, J.A., Trentani, A., and Meerlo, P. (2009). Chronic but not acute foot-shock stress leads to temporary suppression of cell proliferation in rat hippocampus. *Neuroscience* 162, 904–913.
- Danielson, N.B., Kaifosh, P., Zaremba, J.D., Lovett-Barron, M., Tsai, J., Denny, C.A., Balough, E.M., Goldberg, A.R., Drew, L.J., Hen, R., et al. (2016). Distinct contribution of adult-born hippocampal granule cells to context encoding. *Neuron* 90, 101–112.
- Darnaudéry, M., Perez-Martin, M., Del Favero, F., Gomez-Roldan, C., Garcia-Segura, L.M., and Maccari, S. (2007). Early motherhood in rats is associated with a modification of hippocampal function. *Psychoneuroendocrinology* 32, 803–812.
- Dash, P.K., Mach, S.A., and Moore, A.N. (2001). Enhanced neurogenesis in the rodent hippocampus following traumatic brain injury. *J. Neurosci. Res.* 63, 313–319.
- David, D.J., Samuels, B.A., Rainer, Q., Wang, J.-W., Marsteller, D., Mendez, I., Drew, M., Craig, D.A., Guiard, B.P., Guilloux, J.-P., et al. (2009). Neurogenesis-dependent and -independent effects of fluoxetine in an animal model of anxiety/depression. *Neuron* 62, 479–493.
- De Miguel, Z., Haditsch, U., Palmer, T.D., Azpiroz, A., and Sapolsky, R.M. (2018). Adult-generated neurons born during chronic social stress are uniquely adapted to respond to subsequent chronic social stress. *Mol. Psychiatry*. Published online January 8, 2018. <https://doi.org/10.1038/s41380-017-0013-1>.
- Deshpande, A., Bergami, M., Ghanem, A., Conzelmann, K.K., Lepier, A., Götz, M., and Berninger, B. (2013). Retrograde monosynaptic tracing reveals the temporal evolution of inputs onto new neurons in the adult dentate gyrus and olfactory bulb. *Proc. Natl. Acad. Sci. USA* 110, E1152–E1161.
- Dityatev, A., and Rusakov, D.A. (2011). Molecular signals of plasticity at the tetrapartite synapse. *Curr. Opin. Neurobiol.* 21, 353–359.
- Dityatev, A., Brückner, G., Dityateva, G., Grosche, J., Kleene, R., and Schachner, M. (2007). Activity-dependent formation and functions of chondroitin sulfate-rich extracellular matrix of perineuronal nets. *Dev. Neurobiol.* 67, 570–588.
- Drew, L.J., Kheirbek, M.A., Luna, V.M., Denny, C.A., Cloidt, M.A., Wu, M.V., Jain, S., Scharfman, H.E., and Hen, R. (2016). Activation of local inhibitory circuits in the dentate gyrus by adult-born neurons. *Hippocampus* 26, 763–778.

- Eichenbaum, H. (2017). On the Integration of Space, Time, and Memory. *Neuron* 95, 1007–1018.
- Encinas, J.M., Vaahtokari, A., and Enikolopov, G. (2006). Fluoxetine targets early progenitor cells in the adult brain. *Proc. Natl. Acad. Sci. USA* 103, 8233–8238.
- Encinas, J.M., Michurina, T.V., Peunova, N., Park, J.H., Tordo, J., Peterson, D.A., Fishell, G., Koulakov, A., and Enikolopov, G. (2011). Division-coupled astrocytic differentiation and age-related depletion of neural stem cells in the adult hippocampus. *Cell Stem Cell* 8, 566–579.
- Eriksson, P.S., Perfilieva, E., Björk-Eriksson, T., Alborn, A.M., Nordborg, C., Peterson, D.A., and Gage, F.H. (1998). Neurogenesis in the adult human hippocampus. *Nat. Med.* 4, 1313–1317.
- Espósito, M.S., Piatti, V.C., Laplagne, D.A., Morgenstern, N.A., Ferrari, C.C., Pittossi, F.J., and Schinder, A.F. (2005). Neuronal differentiation in the adult hippocampus recapitulates embryonic development. *J. Neurosci.* 25, 10074–10086.
- Fahimi, A., Baktir, M.A., Moghadam, S., Mojabi, F.S., Sumanth, K., Mc Nerney, M.W., Ponnusamy, R., and Salehi, A. (2017). Physical exercise induces structural alterations in the hippocampal astrocytes: exploring the role of BDNF-TrkB signaling. *Brain Struct. Funct.* 222, 1797–1808.
- Fanselow, M.S., and Dong, H.W. (2010). Are the dorsal and ventral hippocampus functionally distinct structures? *Neuron* 65, 7–19.
- Ferrer-Ferrer, M., and Dityatev, A. (2018). Shaping Synapses by the Neural Extracellular Matrix. *Front. Neuroanat.* 12, 40.
- Garrett, L., Zhang, J., Zimprich, A., Niedermeier, K.M., Fuchs, H., Gailus-Durner, V., Hrabě de Angelis, M., Vogt Weisenhorn, D., Wurst, W., and Höfler, S.M. (2015). Conditional reduction of adult born doublecortin-positive neurons reversibly impairs selective behaviors. *Front. Behav. Neurosci.* 9, 302.
- Gatewood, J.D., Morgan, M.D., Eaton, M., McNamara, I.M., Stevens, L.F., Macbeth, A.H., Meyer, E.A.A., Lomas, L.M., Kozub, F.J., Lambert, K.G., and Kinsley, C.H. (2005). Motherhood mitigates aging-related decrements in learning and memory and positively affects brain aging in the rat. *Brain Res. Bull.* 66, 91–98.
- Ge, S., Goh, E.L.K., Sailor, K.A., Kitabatake, Y., Ming, G.L., and Song, H. (2006). GABA regulates synaptic integration of newly generated neurons in the adult brain. *Nature* 439, 589–593.
- Ge, S., Yang, C.H., Hsu, K.S., Ming, G.L., and Song, H. (2007). A critical period for enhanced synaptic plasticity in newly generated neurons of the adult brain. *Neuron* 54, 559–566.
- Glasper, E.R., and Gould, E. (2013). Sexual experience restores age-related decline in adult neurogenesis and hippocampal function. *Hippocampus* 23, 303–312.
- Glasper, E.R., Kozorovitskiy, Y., Pavlic, A., and Gould, E. (2011). Paternal experience suppresses adult neurogenesis without altering hippocampal function in *Peromyscus californicus*. *J. Comp. Neurol.* 519, 2271–2281.
- Gonçalves, J.T., Schafer, S.T., and Gage, F.H. (2016a). Adult neurogenesis in the hippocampus: from stem cells to behavior. *Cell* 167, 897–914.
- Gonçalves, J.T., Bloyd, C.W., Shtrahman, M., Johnston, S.T., Schafer, S.T., Parylak, S.L., Tran, T., Chang, T., and Gage, F.H. (2016b). In vivo imaging of dendritic pruning in dentate granule cells. *Nat. Neurosci.* 19, 788–791.
- Gould, E., Tanapat, P., McEwen, B.S., Flügge, G., and Fuchs, E. (1998). Proliferation of granule cell precursors in the dentate gyrus of adult monkeys is diminished by stress. *Proc. Natl. Acad. Sci. USA* 95, 3168–3171.
- Gould, E., Reeves, A.J., Fallah, M., Tanapat, P., Gross, C.G., and Fuchs, E. (1999). Hippocampal neurogenesis in adult Old World primates. *Proc. Natl. Acad. Sci. USA* 96, 5263–5267.
- Groves, J.O., Leslie, I., Huang, G.J., McHugh, S.B., Taylor, A., Mott, R., Munafò, M., Bannerman, D.M., and Flint, J. (2013). Ablating adult neurogenesis in the rat has no effect on spatial processing: evidence from a novel pharmacogenetic model. *PLoS Genet.* 9, e1003718.
- Gu, Y., Arruda-Carvalho, M., Wang, J., Janoschka, S.R., Josselyn, S.A., Frankland, P.W., and Ge, S. (2012). Optical controlling reveals time-dependent roles for adult-born dentate granule cells. *Nat. Neurosci.* 15, 1700–1706.
- Gu, J., Bao, Y., Chen, J., Huang, C., Zhang, X., Jiang, R., Liu, Q., Liu, Y., Xu, X., and Shi, W. (2016). The expression of NP847 and Sox2 after TBI and its influence on NSCs. *Front. Cell. Neurosci.* 10, 282.
- Gurevicius, K., Gureviciene, I., Valjakka, A., Schachner, M., and Tanila, H. (2004). Enhanced cortical and hippocampal neuronal excitability in mice deficient in the extracellular matrix glycoprotein tenascin-R. *Mol. Cell. Neurosci.* 25, 515–523.
- Harada, K., Kamiya, T., and Tsuboi, T. (2016). Gliotransmitter release from astrocytes: functional, developmental, and pathological implications in the brain. *Front. Neurosci.* 9, 499.
- Hill, A.S., Sahay, A., and Hen, R. (2015). Increasing adult hippocampal neurogenesis is sufficient to reduce anxiety and depression-like behaviors. *Neuropsychopharmacology* 40, 2368–2378.
- Hüttmann, K., Sadgrove, M., Wallraff, A., Hinterkeuser, S., Kirchhoff, F., Steinhäuser, C., and Gray, W.P. (2003). Seizures preferentially stimulate proliferation of radial glia-like astrocytes in the adult dentate gyrus: functional and immunocytochemical analysis. *Eur. J. Neurosci.* 18, 2769–2778.
- Hyer, M.M., Hunter, T.J., Katakam, J., Wolz, T., and Gasper, E.R. (2016). Neurogenesis and anxiety-like behavior in male California mice during the mate's postpartum period. *Eur. J. Neurosci.* 43, 703–709.
- Ikrar, T., Guo, N., He, K., Besnard, A., Levinson, S., Hill, A., Lee, H.-K., Hen, R., Xu, X., and Sahay, A. (2013). Adult neurogenesis modifies excitability of the dentate gyrus. *Front. Neural Circuits* 7, 204.
- Inoue, K., Okamoto, M., Shibato, J., Lee, M.C., Matsui, T., Rakwal, R., and Soya, H. (2015). Long-term mild, rather than intense, exercise enhances adult hippocampal neurogenesis and greatly changes the transcriptomic profile of the hippocampus. *PLoS ONE* 10, e0128720.
- Jakubs, K., Nanobashvili, A., Bonde, S., Ekdahl, C.T., Kokaia, Z., Kokaia, M., and Lindvall, O. (2006). Environment matters: synaptic properties of neurons born in the epileptic adult brain develop to reduce excitability. *Neuron* 52, 1047–1059.
- Jessberger, S., and Gage, F.H. (2014). Adult neurogenesis: bridging the gap between mice and humans. *Trends Cell Biol.* 24, 558–563.
- Jessberger, S., Römer, B., Babu, H., and Kempermann, G. (2005). Seizures induce proliferation and dispersion of doublecortin-positive hippocampal progenitor cells. *Exp. Neurol.* 196, 342–351.
- Jessberger, S., Zhao, C., Toni, N., Clemenson, G.D., Jr., Li, Y., and Gage, F.H. (2007). Seizure-associated, aberrant neurogenesis in adult rats characterized with retrovirus-mediated cell labeling. *J. Neurosci.* 27, 9400–9407.
- Jones, P.L., and Jones, F.S. (2000). Tenascin-C in development and disease: gene regulation and cell function. *Matrix Biol.* 19, 581–596.
- Karumbaiah, L., Enam, S.F., Brown, A.C., Saxena, T., Betancur, M.I., Barker, T.H., and Bellamkonda, R.V. (2015). Chondroitin sulfate glycosaminoglycan hydrogels create endogenous niches for neural stem cells. *Bioconjug. Chem.* 26, 2336–2349.
- Kempermann, G., Kuhn, H.G., and Gage, F.H. (1997). More hippocampal neurons in adult mice living in an enriched environment. *Nature* 386, 493–495.
- Kheirbek, M.A., Drew, L.J., Burghardt, N.S., Costantini, D.O., Tannenholz, L., Ahmari, S.E., Zeng, H., Fenton, A.A., and Hen, R. (2013). Differential control of learning and anxiety along the dorsoventral axis of the dentate gyrus. *Neuron* 77, 955–968.
- Kim, J.I., Lee, J.W., Lee, Y.A., Lee, D.H., Han, N.S., Choi, Y.K., Hwang, B.R., Kim, H.J., and Han, J.S. (2013). Sexual activity counteracts the suppressive effects of chronic stress on adult hippocampal neurogenesis and recognition memory. *Brain Res.* 1538, 26–40.
- Kinsley, C.H., Madonia, L., Gifford, G.W., Tureski, K., Griffin, G.R., Lowry, C., Williams, J., Collins, J., McLearn, H., and Lambert, K.G. (1999). Motherhood improves learning and memory. *Nature* 402, 137–138.
- Klaus, F., Hauser, T., Slomianka, L., Lipp, H.P., and Amrein, I. (2009). A reward increases running-wheel performance without changing cell proliferation, neuronal differentiation or cell death in the dentate gyrus of C57BL/6 mice. *Behav. Brain Res.* 204, 175–181.
- Klempin, F., and Kempermann, G. (2007). Adult hippocampal neurogenesis and aging. *Eur. Arch. Psychiatry Clin. Neurosci.* 257, 271–280.

Knoth, R., Singec, I., Ditter, M., Pantazis, G., Capetian, P., Meyer, R.P., Horvat, V., Volk, B., and Kempermann, G. (2010). Murine features of neurogenesis in the human hippocampus across the lifespan from 0 to 100 years. *PLoS ONE* 5, e8809.

Kobayashi, K., Ikeda, Y., Sakai, A., Yamasaki, N., Haneda, E., Miyakawa, T., and Suzuki, H. (2010). Reversal of hippocampal neuronal maturation by serotonergic antidepressants. *Proc. Natl. Acad. Sci. USA* 107, 8434–8439.

Kohman, R.A., DeYoung, E.K., Bhattacharya, T.K., Peterson, L.N., and Rhodes, J.S. (2012). Wheel running attenuates microglia proliferation and increases expression of a proneurogenic phenotype in the hippocampus of aged mice. *Brain Behav. Immun.* 26, 803–810.

Kohman, R.A., Bhattacharya, T.K., Wojcik, E., and Rhodes, J.S. (2013). Exercise reduces activation of microglia isolated from hippocampus and brain of aged mice. *J. Neuroinflammation* 10, 114.

Kreisel, T., Frank, M.G., Licht, T., Reshef, R., Ben-Menachem-Zidon, O., Baratta, M.V., Maier, S.F., and Yirmiya, R. (2014). Dynamic microglial alterations underlie stress-induced depressive-like behavior and suppressed neurogenesis. *Mol. Psychiatry* 19, 699–709.

Kronenberg, G., Bick-Sander, A., Bunk, E., Wolf, C., Ehninger, D., and Kempermann, G. (2006). Physical exercise prevents age-related decline in precursor cell activity in the mouse dentate gyrus. *Neurobiol. Aging* 27, 1505–1513.

Krzisch, M., Temprana, S.G., Mongiat, L.A., Armida, J., Schmutz, V., Virtanen, M.A., Kocher-Braissant, J., Kraftsik, R., Vutsits, L., Conzelmann, K.K., et al. (2015). Pre-existing astrocytes form functional perisynaptic processes on neurons generated in the adult hippocampus. *Brain Struct. Funct.* 220, 2027–2042.

Kucukdereli, H., Allen, N.J., Lee, A.T., Feng, A., Ozlu, M.I., Conatser, L.M., Chakraborty, C., Workman, G., Weaver, M., Sage, E.H., et al. (2011). Control of excitatory CNS synaptogenesis by astrocyte-secreted proteins Hevin and SPARC. *Proc. Natl. Acad. Sci. USA* 108, E440–E449.

Kuhn, H.G., Dickinson-Anson, H., and Gage, F.H. (1996). Neurogenesis in the dentate gyrus of the adult rat: age-related decrease of neuronal progenitor proliferation. *J. Neurosci.* 16, 2027–2033.

Kuruba, R., Hattiangady, B., Parihar, V.K., Shuai, B., and Shetty, A.K. (2011). Differential susceptibility of interneurons expressing neuropeptide Y or parvalbumin in the aged hippocampus to acute seizure activity. *PLoS ONE* 6, e24493.

Lagace, D.C., Donovan, M.H., DeCarolis, N.A., Farnbauch, L.A., Malhotra, S., Berton, O., Nestler, E.J., Krishnan, V., and Eisch, A.J. (2010). Adult hippocampal neurogenesis is functionally important for stress-induced social avoidance. *Proc. Natl. Acad. Sci. USA* 107, 4436–4441.

Laplagne, D.A., Espósito, M.S., Piatti, V.C., Morgenstern, N.A., Zhao, C., van Praag, H., Gage, F.H., and Schinder, A.F. (2006). Functional convergence of neurons generated in the developing and adult hippocampus. *PLoS Biol.* 4, e409.

Leasure, J.L., and Decker, L. (2009). Social isolation prevents exercise-induced proliferation of hippocampal progenitor cells in female rats. *Hippocampus* 19, 907–912.

Lee, G.H., and D'Arcangelo, G. (2016). New insights into reelin-mediated signaling pathways. *Front. Cell. Neurosci.* 10, 122.

Lensjø, K.K., Lepperød, M.E., Dick, G., Hafting, T., and Fyhn, M. (2017a). Removal of perineuronal nets unlocks juvenile plasticity through network mechanisms of decreased inhibition and increased gamma activity. *J. Neurosci.* 37, 1269–1283.

Lensjø, K.K., Christensen, A.C., Tennøe, S., Fyhn, M., and Hafting, T. (2017b). Differential expression and cell-type specificity of perineuronal nets in hippocampus, medial entorhinal cortex, and visual cortex examined in the rat and mouse. *eNeuro* 4, ENEURO.0379-16.2017.

Leuner, B., Mirescu, C., Noiman, L., and Gould, E. (2007). Maternal experience inhibits the production of immature neurons in the hippocampus during the postpartum period through elevations in adrenal steroids. *Hippocampus* 17, 434–442.

Leuner, B., Glasper, E.R., and Gould, E. (2010). Sexual experience promotes adult neurogenesis in the hippocampus despite an initial elevation in stress hormones. *PLoS ONE* 5, e11597.

Liao, H., Huang, W., Schachner, M., Guan, Y., Guo, J., Yan, J., Qin, J., Bai, X., and Zhang, L. (2008). Beta 1 integrin-mediated effects of tenascin-R domains EGFL and FN6-8 on neural stem/progenitor cell proliferation and differentiation in vitro. *J. Biol. Chem.* 283, 27927–27936.

Lim, S.H., Park, E., You, B., Jung, Y., Park, A.R., Park, S.G., and Lee, J.R. (2013). Neuronal synapse formation induced by microglia and interleukin 10. *PLoS ONE* 8, e81218.

Llorens-Martín, M., Jurado-Arjona, J., Avila, J., and Hernández, F. (2015). Novel connection between newborn granule neurons and the hippocampal CA2 field. *Exp. Neurol.* 263, 285–292.

Llorens-Martín, M., Jurado-Arjona, J., Bolós, M., Pallas-Bazarra, N., and Ávila, J. (2016). Forced swimming sabotages the morphological and synaptic maturation of newborn granule neurons and triggers a unique pro-inflammatory milieu in the hippocampus. *Brain Behav. Immun.* 53, 242–254.

Lugert, S., Basak, O., Knuckles, P., Haussler, U., Fabel, K., Götz, M., Haas, C.A., Kempermann, G., Taylor, V., and Giachino, C. (2010). Quiescent and active hippocampal neural stem cells with distinct morphologies respond selectively to physiological and pathological stimuli and aging. *Cell Stem Cell* 6, 445–456.

Mahmoud, R., Wainwright, S.R., and Galea, L.A. (2016). Sex hormones and adult hippocampal neurogenesis: Regulation, implications, and potential mechanisms. *Front. Neuroendocrinol.* 41, 129–152.

Malberg, J.E., Eisch, A.J., Nestler, E.J., and Duman, R.S. (2000). Chronic antidepressant treatment increases neurogenesis in adult rat hippocampus. *J. Neurosci.* 20, 9104–9110.

Markwardt, S.J., Wadiche, J.I., and Overstreet-Wadiche, L.S. (2009). Input-specific GABAergic signaling to newborn neurons in adult dentate gyrus. *J. Neurosci.* 29, 15063–15072.

McEwen, B.S. (2018). Redefining neuroendocrinology: Epigenetics of brain-body communication over the life course. *Front. Neuroendocrinol.* 49, 8–30.

McRae, P.A., and Porter, B.E. (2012). The perineuronal net component of the extracellular matrix in plasticity and epilepsy. *Neurochem. Int.* 61, 963–972.

Mirescu, C., Peters, J.D., and Gould, E. (2004). Early life experience alters response of adult neurogenesis to stress. *Nat. Neurosci.* 7, 841–846.

Moreno-Jiménez, E.P., Flor-García, M., Terreros-Roncal, J., Rábano, A., Cafiñi, F., Pallas-Bazarra, N., Ávila, J., and Llorens-Martín, M. (2019). Adult hippocampal neurogenesis is abundant in neurologically healthy subjects and drops sharply in patients with Alzheimer's disease. *Nat. Med.* 25, 554–560.

Murthy, S., Kane, G.A., Katchur, K.J., Lara Mejía, P.S., Obiofuma, G., Buschman, T.J., McEwen, B.S., and Gould, E. (2019). Perineuronal nets, inhibitory interneurons and anxiety-related ventral hippocampal neuronal oscillations are altered by early life adversity. *Biol. Psychiatry*. Published online March 11, 2019. <https://doi.org/10.1016/j.biopsych.2019.02.021>.

Nagy, V., Bozdagi, O., Matynia, A., Balcerzyk, M., Okulski, P., Dzwonek, J., Costa, R.M., Silva, A.J., Kaczmarek, L., and Huntley, G.W. (2006). Matrix metalloproteinase-9 is required for hippocampal late-phase long-term potentiation and memory. *J. Neurosci.* 26, 1923–1934.

Nicholson, C., Kamali-Zare, P., and Tao, L. (2011). Brain extracellular space as a diffusion barrier. *Comput. Vis. Sci.* 14, 309–325.

Nilsson, M., Perfilieva, E., Johansson, U., Orwar, O., and Eriksson, P.S. (1999). Enriched environment increases neurogenesis in the adult rat dentate gyrus and improves spatial memory. *J. Neurobiol.* 39, 569–578.

Nimmerjahn, A., Kirchhoff, F., and Helmchen, F. (2005). Resting microglial cells are highly dynamic surveillants of brain parenchyma in vivo. *Science* 308, 1314–1318.

Nokia, M.S., Lensu, S., Ahtainen, J.P., Johansson, P.P., Koch, L.G., Britton, S.L., and Kainulainen, H. (2016). Physical exercise increases adult hippocampal neurogenesis in male rats provided it is aerobic and sustained. *J. Physiol.* 594, 1855–1873.

Opendak, M., and Gould, E. (2015). Adult neurogenesis: a substrate for experience-dependent change. *Trends Cogn. Sci.* 19, 151–161.

Opendak, M., Offit, L., Monari, P., Schoenfeld, T.J., Sonti, A.N., Cameron, H.A., and Gould, E. (2016). Lasting adaptations in social behavior produced

- by social disruption and inhibition of adult neurogenesis. *J. Neurosci.* 36, 7027–7038.
- Overstreet-Wadiche, L.S., Bromberg, D.A., Bensen, A.L., and Westbrook, G.L. (2006). Seizures accelerate functional integration of adult-generated granule cells. *J. Neurosci.* 26, 4095–4103.
- Paolicelli, R.C., Bolasco, G., Pagani, F., Maggi, L., Scianni, M., Panzanelli, P., Giustetto, M., Ferreira, T.A., Guiducci, E., Dumas, L., et al. (2011). Synaptic pruning by microglia is necessary for normal brain development. *Science* 333, 1456–1458.
- Parent, J.M., and Lowenstein, D.H. (2002). Seizure-induced neurogenesis: are more new neurons good for an adult brain? *Prog. Brain Res.* 135, 121–131.
- Parpura, V., and Zorec, R. (2010). Gliotransmission: exocytotic release from astrocytes. *Brain Res. Brain Res. Rev.* 63, 83–92.
- Pawluski, J.L., and Galea, L.A.M. (2007). Reproductive experience alters hippocampal neurogenesis during the postpartum period in the dam. *Neuroscience* 149, 53–67.
- Pelkey, K.A., Chittajallu, R., Craig, M.T., Tricoire, L., Wester, J.C., and McBain, C.J. (2017). Hippocampal GABAergic inhibitory interneurons. *Physiol. Rev.* 97, 1619–1747.
- Pesold, C., Impagnatiello, F., Pisu, M.G., Uzunov, D.P., Costa, E., Guidotti, A., and Caruncho, H.J. (1998). Reelin is preferentially expressed in neurons synthesizing gamma-aminobutyric acid in cortex and hippocampus of adult rats. *Proc. Natl. Acad. Sci. USA* 95, 3221–3226.
- Pfeiffer, T., Avignone, E., and Nägerl, U.V. (2016). Induction of hippocampal long-term potentiation increases the morphological dynamics of microglial processes and prolongs their contacts with dendritic spines. *Sci. Rep.* 6, 32422.
- Prieto, G.A., Tong, L., Smith, E.D., and Cotman, C.W. (2019). TNF α and IL-1 β but not IL-18 suppresses hippocampal long-term potentiation directly at the synapse. *Neurochem. Res.* 44, 49–60.
- Pujadas, L., Gruart, A., Bosch, C., Delgado, L., Teixeira, C.M., Rossi, D., de Lecea, L., Martínez, A., Delgado-García, J.M., and Soriano, E. (2010). Reelin regulates postnatal neurogenesis and enhances spine hypertrophy and long-term potentiation. *J. Neurosci.* 30, 4636–4649.
- Qiu, S., Zhao, L.F., Korwek, K.M., and Weeber, E.J. (2006). Differential reelin-induced enhancement of NMDA and AMPA receptor activity in the adult hippocampus. *J. Neurosci.* 26, 12943–12955.
- Rankin-Gee, E.K., McRae, P.A., Baranov, E., Rogers, S., Wandrey, L., and Porter, B.E. (2015). Perineuronal net degradation in epilepsy. *Epilepsia* 56, 1124–1133.
- Restivo, L., Niibori, Y., Mercaldo, V., Josselyn, S.A., and Frankland, P.W. (2015). Development of adult-generated cell connectivity with excitatory and inhibitory cell populations in the hippocampus. *J. Neurosci.* 35, 10600–10612.
- Revest, J.M., Dupret, D., Koehl, M., Funk-Reiter, C., Grosjean, N., Piazza, P.V., and Abrous, D.N. (2009). Adult hippocampal neurogenesis is involved in anxiety-related behaviors. *Mol. Psychiatry* 14, 959–967.
- Ruddy, R.M., and Morshead, C.M. (2018). Home sweet home: the neural stem cell niche throughout development and after injury. *Cell Tissue Res.* 371, 125–141.
- Saghatelian, A.K., Dityatev, A., Schmidt, S., Schuster, T., Bartsch, U., and Schachner, M. (2001). Reduced perisomatic inhibition, increased excitatory transmission, and impaired long-term potentiation in mice deficient for the extracellular matrix glycoprotein tenascin-R. *Mol. Cell. Neurosci.* 17, 226–240.
- Sah, N., Peterson, B.D., Lubejko, S.T., Vivar, C., and van Praag, H. (2017). Running reorganizes the circuitry of one-week-old adult-born hippocampal neurons. *Sci. Rep.* 7, 10903.
- Sahay, A., Scobie, K.N., Hill, A.S., O'Carroll, C.M., Kheirbek, M.A., Burghardt, N.S., Fenton, A.A., Dranovsky, A., and Hen, R. (2011). Increasing adult hippocampal neurogenesis is sufficient to improve pattern separation. *Nature* 472, 466–470.
- Saxe, M.D., Battaglia, F., Wang, J.W., Malleret, G., David, D.J., Monckton, J.E., Garcia, A.D., Sofroniew, M.V., Kandel, E.R., Santarelli, L., et al. (2006). Ablation of hippocampal neurogenesis impairs contextual fear conditioning and synaptic plasticity in the dentate gyrus. *Proc. Natl. Acad. Sci. USA* 103, 17501–17506.
- Saxe, M.D., Malleret, G., Vronskaya, S., Mendez, I., Garcia, A.D., Sofroniew, M.V., Kandel, E.R., and Hen, R. (2007). Paradoxical influence of hippocampal neurogenesis on working memory. *Proc. Natl. Acad. Sci. USA* 104, 4642–4646.
- Schafer, D.P., Lehrman, E.K., Kautzman, A.G., Koyama, R., Mardinly, A.R., Yamasaki, R., Ransohoff, R.M., Greenberg, M.E., Barres, B.A., and Stevens, B. (2012). Microglia sculpt postnatal neural circuits in an activity and complement-dependent manner. *Neuron* 74, 691–705.
- Scharfman, H.E., Goodman, J.H., and Sollas, A.L. (2000). Granule-like neurons at the hilar/CA3 border after status epilepticus and their synchrony with area CA3 pyramidal cells: functional implications of seizure-induced neurogenesis. *J. Neurosci.* 20, 6144–6158.
- Schmidt-Hieber, C., Jonas, P., and Bischofberger, J. (2004). Enhanced synaptic plasticity in newly generated granule cells of the adult hippocampus. *Nature* 429, 184–187.
- Schoenfeld, T.J., Rada, P., Pieruzzini, P.R., Hsueh, B., and Gould, E. (2013). Physical exercise prevents stress-induced activation of granule neurons and enhances local inhibitory mechanisms in the dentate gyrus. *J. Neurosci.* 33, 7770–7777.
- Schoenfeld, T.J., McCausland, H.C., Sonti, A.N., and Cameron, H.A. (2016). Anxiolytic actions of exercise in absence of new neurons. *Hippocampus* 26, 1373–1378.
- Schoenfeld, T.J., McCausland, H.C., Morris, H.D., Padmanaban, V., and Cameron, H.A. (2017). Stress and loss of adult neurogenesis differentially reduce hippocampal volume. *Biol. Psychiatry* 82, 914–923.
- Seri, B., Garcia-Verdugo, J.M., McEwen, B.S., and Alvarez-Buylla, A. (2001). Astrocytes give rise to new neurons in the adult mammalian hippocampus. *J. Neurosci.* 21, 7153–7160.
- Shapiro, L.A., and Ribak, C.E. (2006). Newly born dentate granule neurons after pilocarpine-induced epilepsy have hilar basal dendrites with immature synapses. *Epilepsy Res.* 69, 53–66.
- Shapiro, L.A., Wang, L., and Ribak, C.E. (2008). Rapid astrocyte and microglial activation following pilocarpine-induced seizures in rats. *Epilepsia* 49 (Suppl 2), 33–41.
- Shors, T.J., Townsend, D.A., Zhao, M., Kozorovitskiy, Y., and Gould, E. (2002). Neurogenesis may relate to some but not all types of hippocampal-dependent learning. *Hippocampus* 12, 578–584.
- Sierra, A., Encinas, J.M., Deudero, J.J.P., Chancey, J.H., Enikolopov, G., Overstreet-Wadiche, L.S., Tsirka, S.E., and Matic-Savatic, M. (2010). Microglia shape adult hippocampal neurogenesis through apoptosis-coupled phagocytosis. *Cell Stem Cell* 7, 483–495.
- Simpson, J., and Kelly, J.P. (2011). The impact of environmental enrichment in laboratory rats—behavioural and neurochemical aspects. *Behav. Brain Res.* 222, 246–264.
- Smith, A.C.W., Scofield, M.D., and Kalivas, P.W. (2015a). The tetrapartite synapse: Extracellular matrix remodeling contributes to corticoaccumbens plasticity underlying drug addiction. *Brain Res.* 1628 (Pt A), 29–39.
- Smith, C.C., Mauricio, R., Nobre, L., Marsh, B., Wüst, R.C.I., Rossiter, H.B., and Ichiyama, R.M. (2015b). Differential regulation of perineuronal nets in the brain and spinal cord with exercise training. *Brain Res. Bull.* 111, 20–26.
- Snyder, J.S., Choe, J.S., Clifford, M.A., Jeurling, S.I., Hurley, P., Brown, A., Kamhi, J.F., and Cameron, H.A. (2009a). Adult-born hippocampal neurons are more numerous, faster maturing, and more involved in behavior in rats than in mice. *J. Neurosci.* 29, 14484–14495.
- Snyder, J.S., Glover, L.R., Sanzone, K.M., Kamhi, J.F., and Cameron, H.A. (2009b). The effects of exercise and stress on the survival and maturation of adult-generated granule cells. *Hippocampus* 19, 898–906.
- Snyder, J.S., Soumier, A., Brewer, M., Pickel, J., and Cameron, H.A. (2011). Adult hippocampal neurogenesis buffers stress responses and depressive behaviour. *Nature* 476, 458–461.
- Song, H., Stevens, C.F., and Gage, F.H. (2002). Astroglia induce neurogenesis from adult neural stem cells. *Nature* 417, 39–44.
- Song, J., Sun, J., Moss, J., Wen, Z., Sun, G.J., Hsu, D., Zhong, C., Davoudi, H., Christian, K.M., Toni, N., et al. (2013). Parvalbumin interneurons mediate

- neuronal circuitry-neurogenesis coupling in the adult hippocampus. *Nat. Neurosci.* **16**, 1728–1730.
- Sorg, B.A., Berretta, S., Blacktop, J.M., Fawcett, J.W., Kitagawa, H., Kwok, J.C.F., and Miquel, M. (2016). Casting a wide net: role of perineuronal nets in neural plasticity. *J. Neurosci.* **36**, 11459–11468.
- Sorrells, S.F., Paredes, M.F., Cebrian-Silla, A., Sandoval, K., Qi, D., Kelley, K.W., James, D., Mayer, S., Chang, J., Auguste, K.I., et al. (2018). Human hippocampal neurogenesis drops sharply in children to undetectable levels in adults. *Nature* **555**, 377–381.
- Spalding, K.L., Bergmann, O., Alkass, K., Bernard, S., Salehpour, M., Huttner, H.B., Boström, E., Westerlund, I., Vial, C., Buchholz, B.A., et al. (2013). Dynamics of hippocampal neurogenesis in adult humans. *Cell* **153**, 1219–1227.
- Stellwagen, D., and Malenka, R.C. (2006). Synaptic scaling mediated by glial TNF- α . *Nature* **440**, 1054–1059.
- Stranahan, A.M., Khalil, D., and Gould, E. (2006). Social isolation delays the positive effects of running on adult neurogenesis. *Nat. Neurosci.* **9**, 526–533.
- Suh, H., Consiglio, A., Ray, J., Sawai, T., D'Amour, K.A., and Gage, F.H. (2007). In vivo fate analysis reveals the multipotent and self-renewal capacities of Sox2+ neural stem cells in the adult hippocampus. *Cell Stem Cell* **7**, 515–528.
- Sultan, S., Li, L., Moss, J., Petrelli, F., Cassé, F., Gebara, E., Lopatar, J., Pfrieger, F.W., Bezzi, P., Bischofberger, J., and Toni, N. (2015). Synaptic integration of adult-born hippocampal neurons is locally controlled by astrocytes. *Neuron* **88**, 957–972.
- Sun, D., Daniels, T.E., Rolfe, A., Waters, M., and Hamm, R. (2015). Inhibition of injury-induced cell proliferation in the dentate gyrus of the hippocampus impairs spontaneous cognitive recovery after traumatic brain injury. *J. Neurotrauma* **32**, 495–505.
- Suttokus, A., Rohn, S., Weigel, S., Glöckner, P., Arendt, T., and Morawski, M. (2014). AggreCAN, link protein and tenascin-R are essential components of the perineuronal net to protect neurons against iron-induced oxidative stress. *Cell Death Dis.* **5**, e1119.
- Teixeira, C.M., Kron, M.M., Masachs, N., Zhang, H., Lagace, D.C., Martinez, A., Reillo, I., Duan, X., Bosch, C., Pujadas, L., et al. (2012). Cell-autonomous inactivation of the reelin pathway impairs adult neurogenesis in the hippocampus. *J. Neurosci.* **32**, 12051–12065.
- Toni, N., Laplagne, D.A., Zhao, C., Lombardi, G., Ribak, C.E., Gage, F.H., and Schinder, A.F. (2008). Neurons born in the adult dentate gyrus form functional synapses with target cells. *Nat. Neurosci.* **11**, 901–907.
- Tremblay, M.-È., Lowery, R.L., and Majewska, A.K. (2010). Microglial interactions with synapses are modulated by visual experience. *PLoS Biol.* **8**, e1000527.
- Trincherio, M.F., Buttner, K.A., Sulkes Cuevas, J.N., Temprana, S.G., Fontanet, P.A., Monzón-Salinas, M.C., Ledda, F., Paratcha, G., and Schinder, A.F. (2017). High plasticity of new granule cells in the aging hippocampus. *Cell Rep.* **21**, 1129–1139.
- Tynan, R.J., Beynon, S.B., Hinwood, M., Johnson, S.J., Nilsson, M., Woods, J.J., and Walker, F.R. (2013). Chronic stress-induced disruption of the astrocyte network is driven by structural atrophy and not loss of astrocytes. *Acta Neuropathol.* **126**, 75–91.
- van 't Spijker, H.M., and Kwok, J.C.F. (2017). A sweet talk: the molecular systems of perineuronal nets in controlling neuronal communication. *Front. Integr. Neurosci.* **11**, 33.
- Vega-Rivera, N.M., Ortiz-López, L., Gómez-Sánchez, A., Oikawa-Sala, J., Estrada-Camarena, E.M., and Ramírez-Rodríguez, G.B. (2016). The neurogenic effects of an enriched environment and its protection against the behavioral consequences of chronic mild stress persistent after enrichment cessation in six-month-old female Balb/C mice. *Behav. Brain Res.* **301**, 72–83.
- Villasana, L.E., Kim, K.N., Westbrook, G.L., and Schnell, E. (2015). Functional integration of adult-born hippocampal neurons after traumatic brain injury(1,2,3). *eNeuro* **2**, ENEURO.0056-15.2015.
- Vivar, C., Potter, M.C., Choi, J., Lee, J.Y., Stringer, T.P., Callaway, E.M., Gage, F.H., Suh, H., and van Praag, H. (2012). Monosynaptic inputs to new neurons in the dentate gyrus. *Nat. Commun.* **3**, 1107.
- Vivar, C., Potter, M.C., and van Praag, H. (2013). All about running: synaptic plasticity, growth factors and adult hippocampal neurogenesis. *Curr. Top. Behav. Neurosci.* **15**, 189–210.
- Vivar, C., Peterson, B.D., and van Praag, H. (2016). Running rewires the neuronal network of adult-born dentate granule cells. *Neuroimage* **131**, 29–41.
- Walter, J., Keiner, S., Witte, O.W., and Redecker, C. (2010). Differential stroke-induced proliferative response of distinct precursor cell subpopulations in the young and aged dentate gyrus. *Neuroscience* **169**, 1279–1286.
- Wang, X., Lou, N., Xu, Q., Tian, G.-F., Peng, W.G., Han, X., Kang, J., Takano, T., and Nedergaard, M. (2006). Astrocytic Ca²⁺ signaling evoked by sensory stimulation in vivo. *Nat. Neurosci.* **9**, 816–823.
- Wang, S., Brunne, B., Zhao, S., Chai, X., Li, J., Lau, J., Failla, A.V., Zobiak, B., Sibbe, M., Westbrook, G.L., et al. (2018). Trajectory analysis unveils reelin's role in the directed migration of granule cells in the dentate gyrus. *J. Neurosci.* **38**, 137–148.
- Weeber, E.J., Beffert, U., Jones, C., Christian, J.M., Forster, E., Sweatt, J.D., and Herz, J. (2002). Reelin and ApoE receptors cooperate to enhance hippocampal synaptic plasticity and learning. *J. Biol. Chem.* **277**, 39944–39952.
- Weinhard, L., di Bartolomei, G., Bolasco, G., Machado, P., Schieber, N.L., Neniskyte, U., Exiga, M., Vadisiute, A., Raggioli, A., Schertel, A., et al. (2018). Microglia remodel synapses by presynaptic trogocytosis and spine head filopodia induction. *Nat. Commun.* **9**, 1228.
- Wiera, G., Wozniak, G., Bajor, M., Kaczmarek, L., and Mozrzymas, J.W. (2013). Maintenance of long-term potentiation in hippocampal mossy fiber-CA3 pathway requires fine-tuned MMP-9 proteolytic activity. *Hippocampus* **23**, 529–543.
- Winship, I.R., Plaa, N., and Murphy, T.H. (2007). Rapid astrocyte calcium signals correlate with neuronal activity and onset of the hemodynamic response in vivo. *J. Neurosci.* **27**, 6268–6272.
- Wójcik-Stanaszek, L., Sypecka, J., Szymczak, P., Ziemka-Nalecz, M., Khrestchatsky, M., Rivera, S., and Zalewska, T. (2011). The potential role of metalloproteinases in neurogenesis in the gerbil hippocampus following global forebrain ischemia. *PLoS ONE* **6**, e22465.
- Won, S.J., Kim, S.H., Xie, L., Wang, Y., Mao, X.O., Jin, K., and Greenberg, D.A. (2006). Reelin-deficient mice show impaired neurogenesis and increased stroke size. *Exp. Neurol.* **198**, 250–259.
- Xu, J.C., Xiao, M.F., Jakovcevski, I., Sivukhina, E., Hargus, G., Cui, Y.F., Irintchev, A., Schachner, M., and Bernreuther, C. (2014). The extracellular matrix glycoprotein tenascin-R regulates neurogenesis during development and in the adult dentate gyrus of mice. *J. Cell Sci.* **127**, 641–652.
- Yamada, J., Ohgomori, T., and Jinno, S. (2015). Perineuronal nets affect parvalbumin expression in GABAergic neurons of the mouse hippocampus. *Eur. J. Neurosci.* **41**, 368–378.
- Yamada, J., Nadanaka, S., Kitagawa, H., Takeuchi, K., and Jinno, S. (2018). Increased synthesis of chondroitin sulfate proteoglycan promotes adult hippocampal neurogenesis in response to enriched environment. *J. Neurosci.* **38**, 8496–8513.
- Yang, F., Liu, Z.R., Chen, J., Zhang, S.J., Quan, Q.Y., Huang, Y.G., and Jiang, W. (2010). Roles of astrocytes and microglia in seizure-induced aberrant neurogenesis in the hippocampus of adult rats. *J. Neurosci. Res.* **88**, 519–529.
- Ye, Q., and Miao, Q.L. (2013). Experience-dependent development of perineuronal nets and chondroitin sulfate proteoglycan receptors in mouse visual cortex. *Matrix Biol.* **32**, 352–363.
- York, E.M., Bernier, L.P., and MacVicar, B.A. (2018). Microglial modulation of neuronal activity in the healthy brain. *Dev. Neurobiol.* **78**, 593–603.
- Zhao, C., Teng, E.M., Summers, R.G., Jr., Ming, G.L., and Gage, F.H. (2006). Distinct morphological stages of dentate granule neuron maturation in the adult mouse hippocampus. *J. Neurosci.* **26**, 3–11.
- Zhao, C., Jou, J., Wolff, L.J., Sun, H., and Gage, F.H. (2015). Spine morphogenesis in newborn granule cells is differentially regulated in the outer and middle molecular layers. *J. Comp. Neurol.* **523**, 1588.
- Ziv, Y., Ron, N., Butovsky, O., Landa, G., Sudai, E., Greenberg, N., Cohen, H., Kipnis, J., and Schwartz, M. (2006). Immune cells contribute to the maintenance of neurogenesis and spatial learning abilities in adulthood. *Nat. Neurosci.* **9**, 268–275.